



DAVINCI

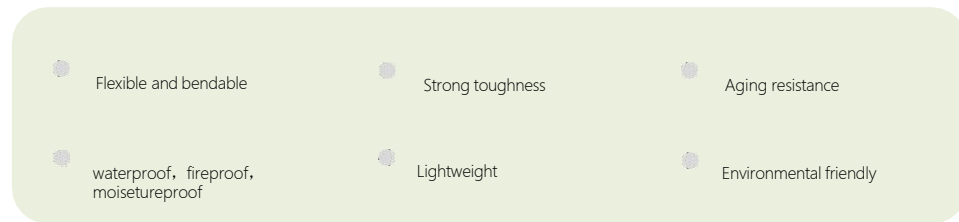
PREMIUM WALL PANELS & DECOR



Cost comparison between DAVINCI Flexible Stone and Natural Stone



PRODUCT FEATURES AND ADVANTAGES



- ★ No need to knock off the old base layer, it can be applied directly, no solid waste discharge.
- ★ High output, low cost, fast construction time, easy construction and great aesthetic look
- ★ Tailor-made products in line with local customs or styles

PRODUCT FEATURES AND ADVANTAGES

	stone	Exterior wall tiles	Coating	Aluminum composite panel	DAVINCI Flexible stone
Environmentally friendly	Environmentally friendly	Not environmentally friendly	Not environmentally friendly	Not environmentally friendly	Environmental friendly
Transport	Heavier High cost	Heavier High cost	High cost	High cost	Low transportation costs, light weight, energy saving
Safety	Unsafe	Unsafe, Risk of falling off	Safe	Unsafe	Safe, lightweight, thin, no risk of falling off for high-rise building
Durability	Durable	Durable	easy to fade	Generally	Durable, Freeze-resistant fire, aging and UV resistance
Fire resistance	Fireproof	Fireproof	/	No fireproof	Class A fire protection
Convenience	Construction is inconvenient	Construction is inconvenient	Easy to construct	Construction is inconvenient	Easy to construct
Styles and textures	limited expressiveness	Limited styles	limited Styles	Limited Styles	Unlimited styles Realistic imitation of stone, wood, leather, metal
light pollution	Smaller	Yes	None	High	Natural texture, no light pollution



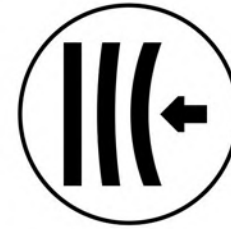
Natural Realistic
Look & Feel



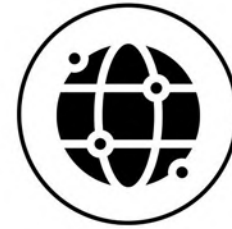
Lightweight
Easy Installation



Large Formats &
Infinite Style Choices



UV, Fire, Freeze
Resistant



Worldwide Delivery

Supplementary explanation

1.Product Quality

Embrace the Superiority of Nature. Our soft stone products are meticulously crafted to restore the innate beauty of nature, ensuring each piece possesses a distinctive texture, rendering no two alike. This unparalleled authenticity sets us apart from conventional ceramic tiles and coatings. Immerse yourself in the unparalleled authenticity and unparalleled experience we offer.



② Thickness and Product Section sizes

Our products are inherently designed to mirror nature's authenticity, striving to restore its pure existence. The presence of concave and convex textures results in slight variations in edge thickness, yet this characteristic echoes the natural world, enhancing its authenticity. While flat products boast uniform surfaces, minor production errors may occur, albeit well within international standards.



Supplementary explanation

1. Product Quality

④ Difference in color shades

Understanding Soft Stone:

At the heart of our soft stone products lie carefully selected ingredients: modified inorganic clay and natural stone powder. Through our meticulous production process, these elements interact with varying temperatures, resulting in a palette of rich, natural colors that capture the essence of the outdoors.

It's essential to recognize that each batch of raw materials we use possesses its own unique origin and characteristics, which can lead to subtle differences in color when replenishing orders. To ensure consistency, we recommend planning your orders meticulously, acquiring all required products at once and minimizing the need for replenishment.

When you've finalized your desired color scheme, rest assured that our factory employs stringent quality control measures to maintain precision throughout production. However, it's important to note that slight color variations between batches are a common trait in decorative materials like ours.

Additionally, we advise considering the influence of lighting conditions, backgrounds, and electronic screens on color perception. To ensure complete satisfaction, we encourage you to request physical samples before making your final decision.

In choosing soft stone, you're embracing a product that not only captures the beauty of nature but also offers unparalleled authenticity and versatility for your project.



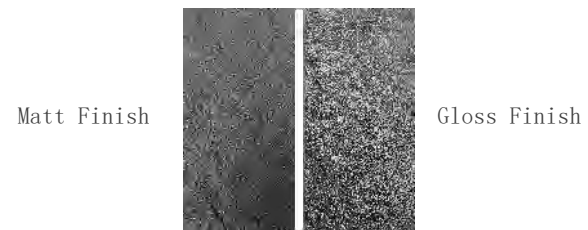
Real photos of the same product with different lights under the same background

⑤ Gloss Effects and Finish

Soft stone products boast a naturally elegant matte effect on their surfaces, providing a sophisticated touch to any setting. However, we understand that certain projects may call for a brighter finish to suit specific aesthetic preferences or functional needs.

For such cases, we offer the option of applying a layer of sealant finish to enhance the surface brightness according to your requirements. Our coating series products already feature a subtle coating effect before they leave the factory. Should you desire a stronger glossiness, additional sealant application or self-treatment can be arranged before the product is dispatched.

With this flexibility, we ensure that your soft stone products not only meet but exceed your expectations, delivering the perfect balance of style and functionality to your space.



The original products from factory is mat finish, and sealant covered can be shiny finish.

2.Changing Color

To ensure your soft stone products perfectly complement your design vision, we offer two options for color customization. You can provide color cards or real samples to our factory for precise color mixing. Alternatively, you have the option to purchase high-quality national standard exterior wall water-based paint for spraying.

We recommend testing the chosen color on a small area first to confirm that it meets your expectations. Once satisfied with the result, proceed to apply it to the larger area. In harsh outdoor environments, such as extreme weather conditions, we advise adding an extra layer of protection by applying a protective coating, such as fluorocarbon paint, to preserve the color and integrity of your soft stone surfaces.

Concrete Style Board
Size: 3000*1200mm/3000*600mm
Thickness: 3-5mm



Pure White 050



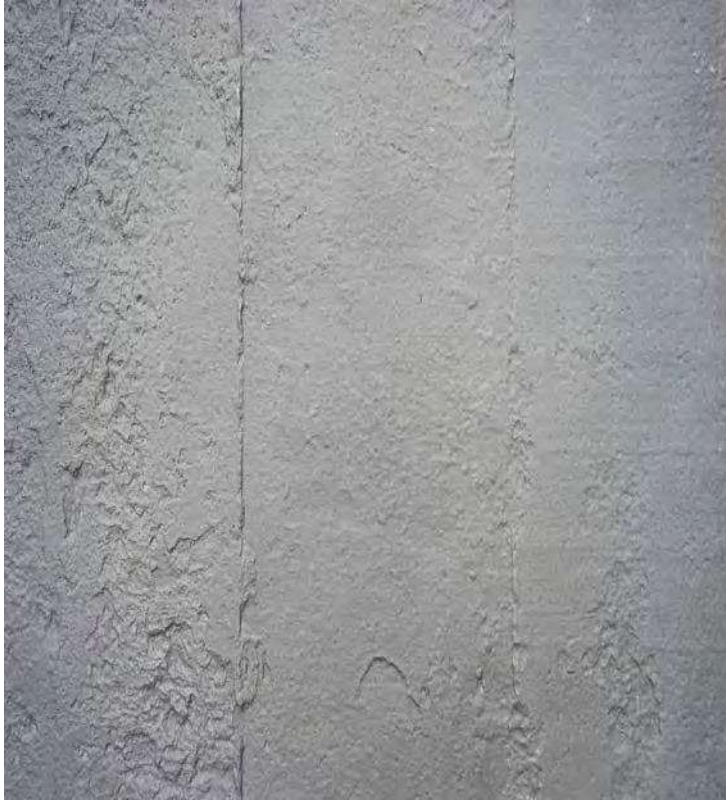
Beige 052



Light Grey 031



Medium Grey 038



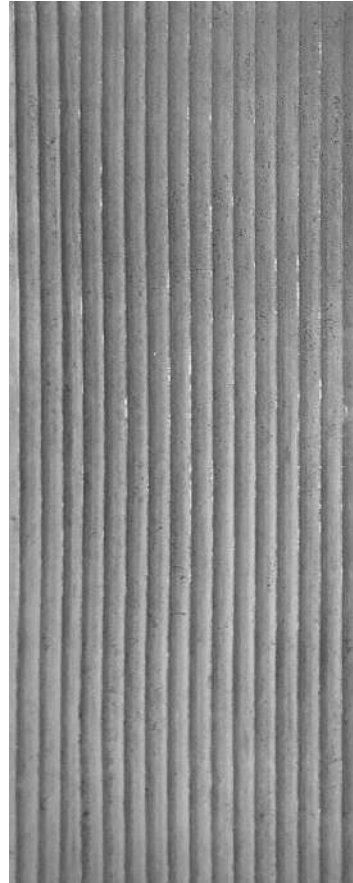
*product style



Ripple Board
Size: 2780*600mm
Thickness: 3-5mm



Beige 052



Grey 032





Wood Concrete Board

Size: 2950*1120/2950*560mm

Thickness: 3-5mm



Light Grey 031



Medium Grey 038





Travertino Style

Size: 3000*600mm

Thickness: 3-5mm



Beige 052



Pure White 050



Light Grey 031



Dark Grey 043





Lime Stone Board
Size: 2400*600mm
Thickness: 4-8mm



Beige 052



Dark Grey 043





Fine Line Stone Board
Size: 2800*600mm
Thickness: 3-5mm



Beige 052



Grey 032





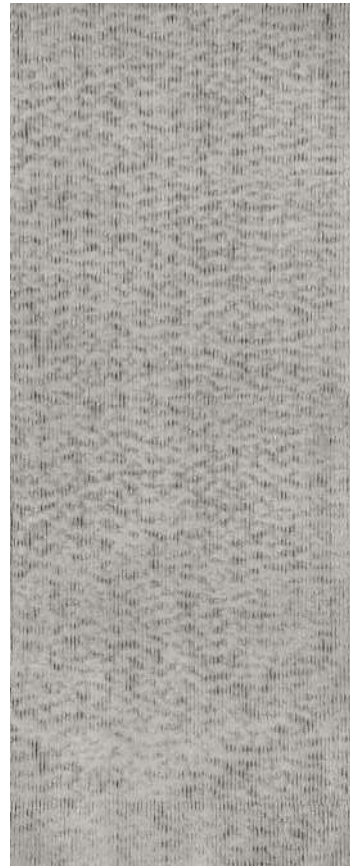
Ridged Stone

Size: 2950*670mm

Thickness: 3-5mm



Beige 052



Grey 221



Pure White 050





Cliff Stone

Size: 2400*300mm

Thickness: 4-8mm



Beige 052

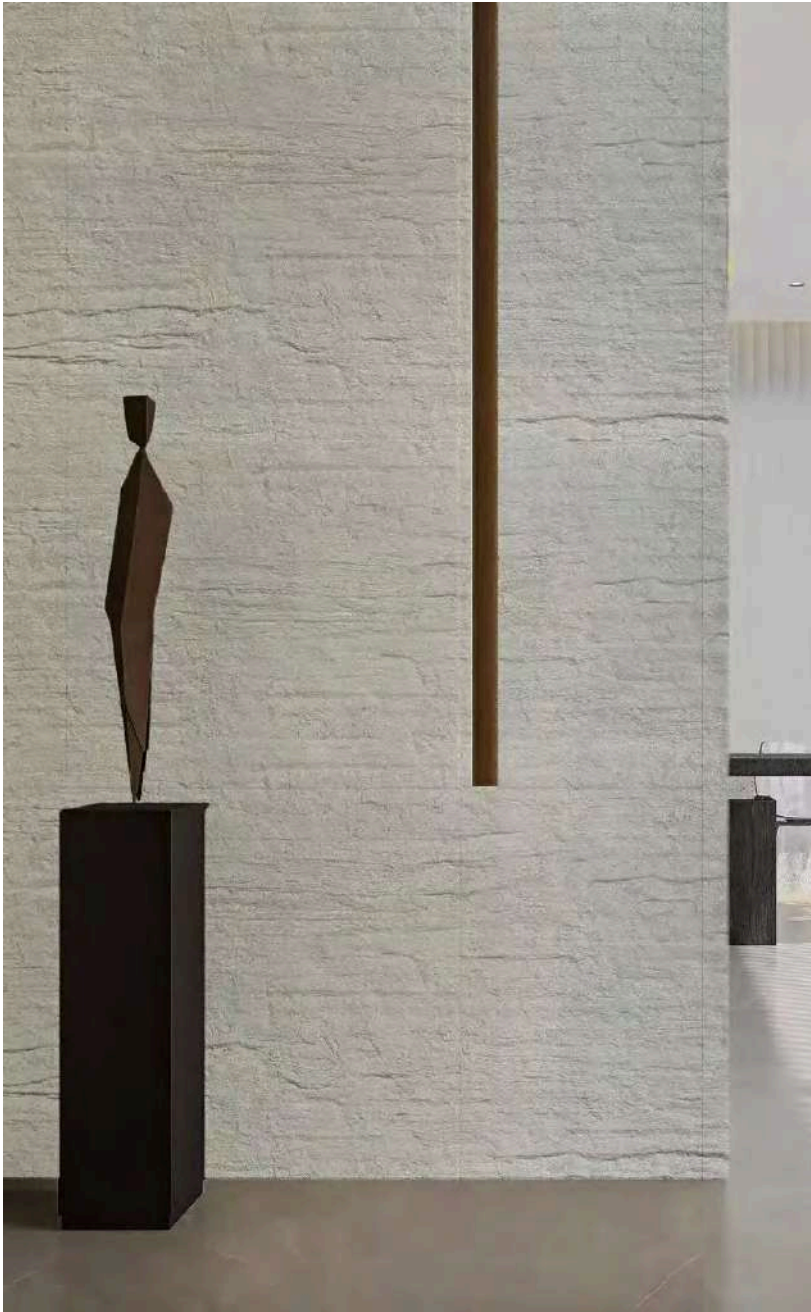


Dark Grey 043



Light Yellow 053B

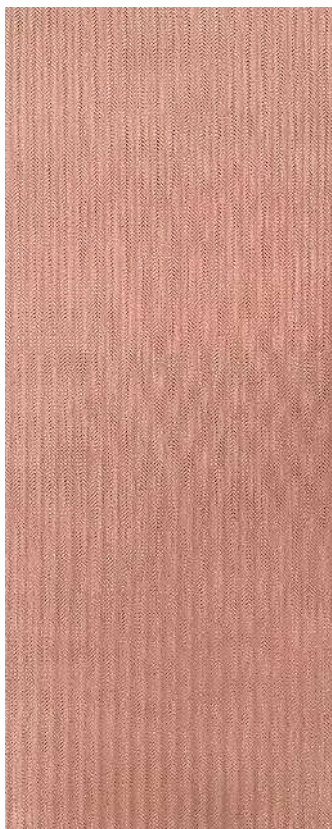




Woven Style

Size: 1500*600mm

Thickness: 3-5mm



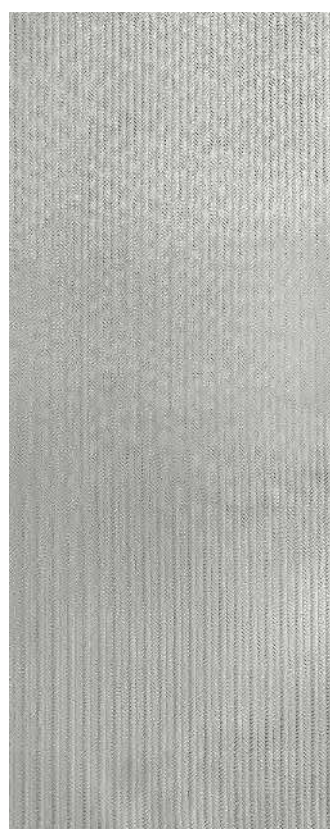
Jacinth 089



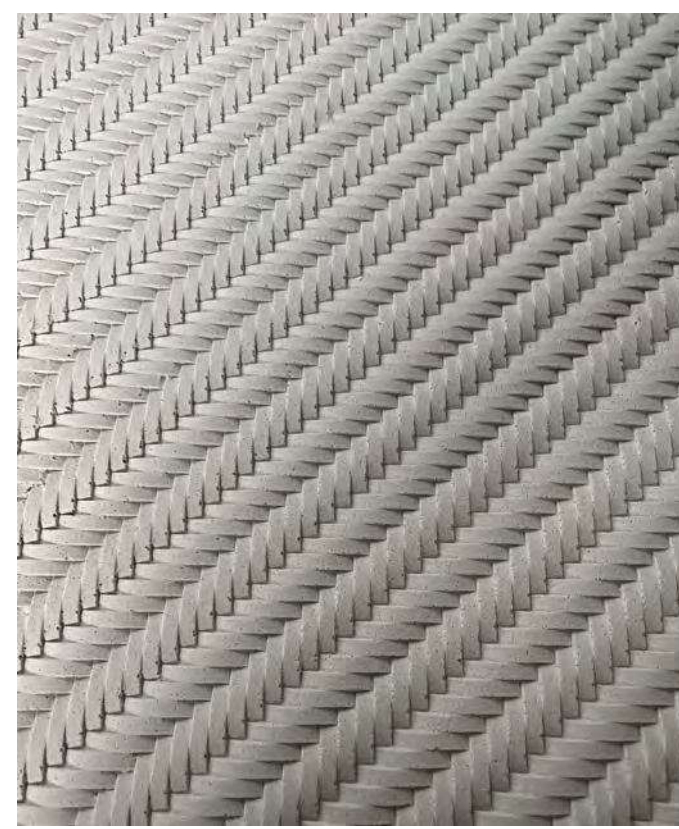
Khaki 056A



Beige 052



Grey 221





Rusted Board

Size: 2960*970mm/3040*1180mm

Thickness: 3-5mm

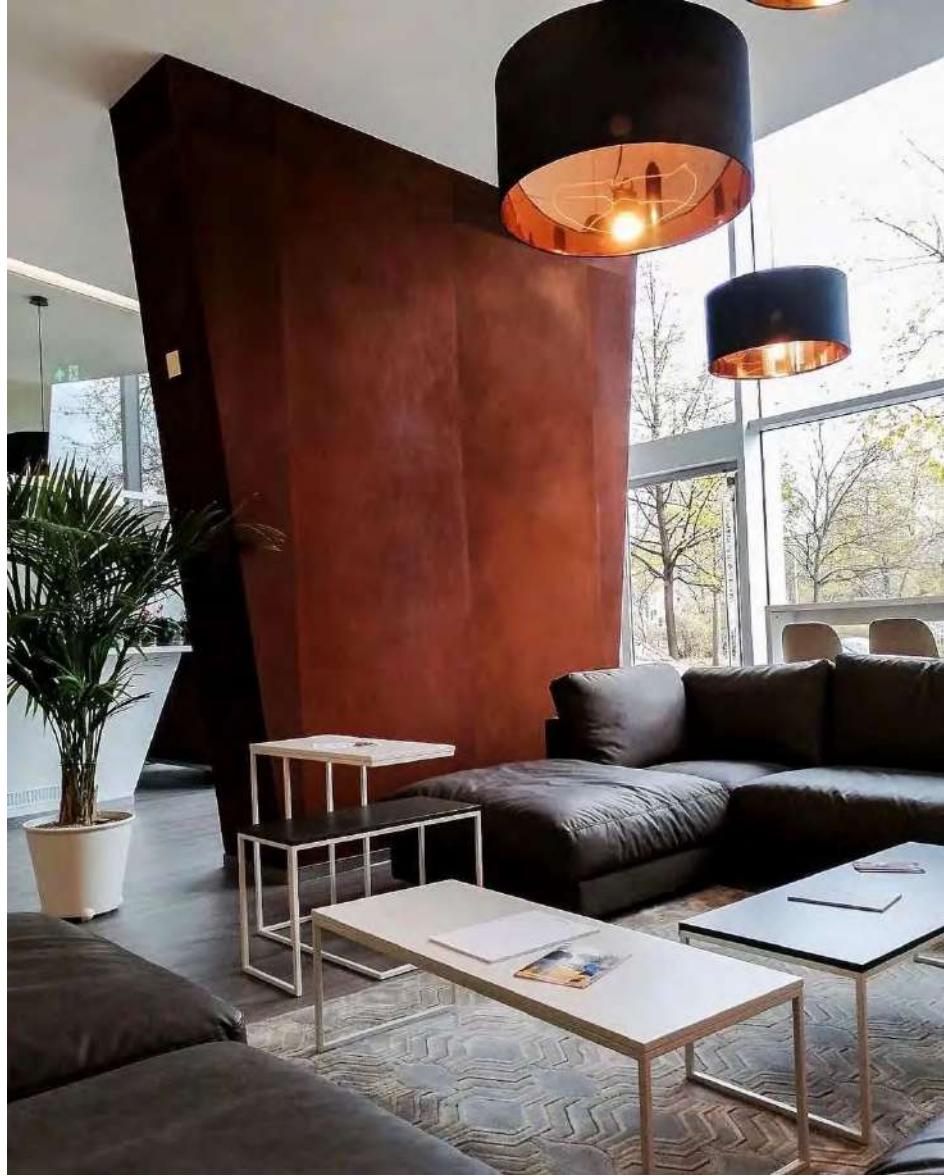


Medium plaid



Bush-hammered





Square Line Stone
Size: 2800*580mm
Thickness: 3-5mm

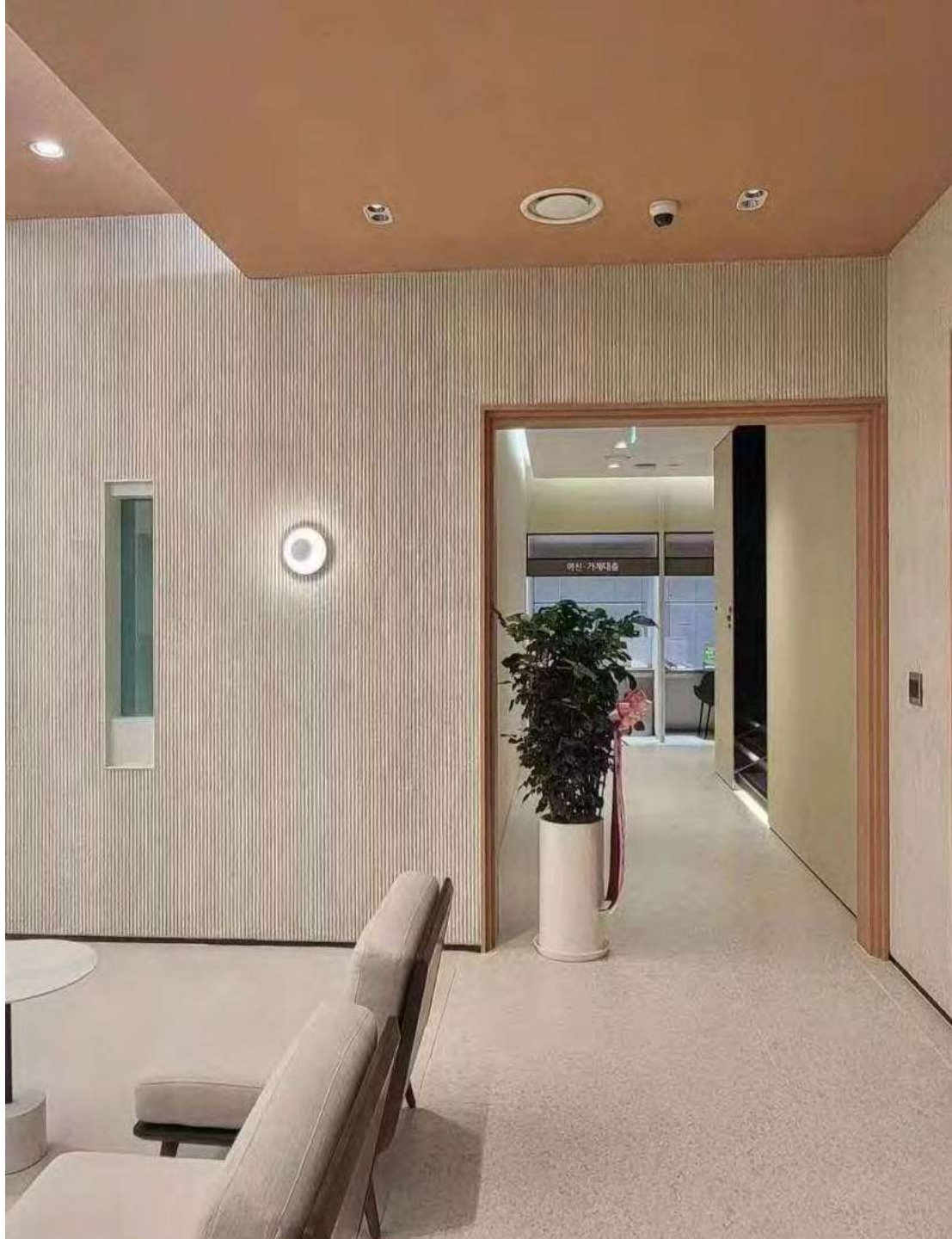


Beige 052



Dark grey 043





Rounded Line Stone
Size: 2800*600mm
Thickness: 3-5mm

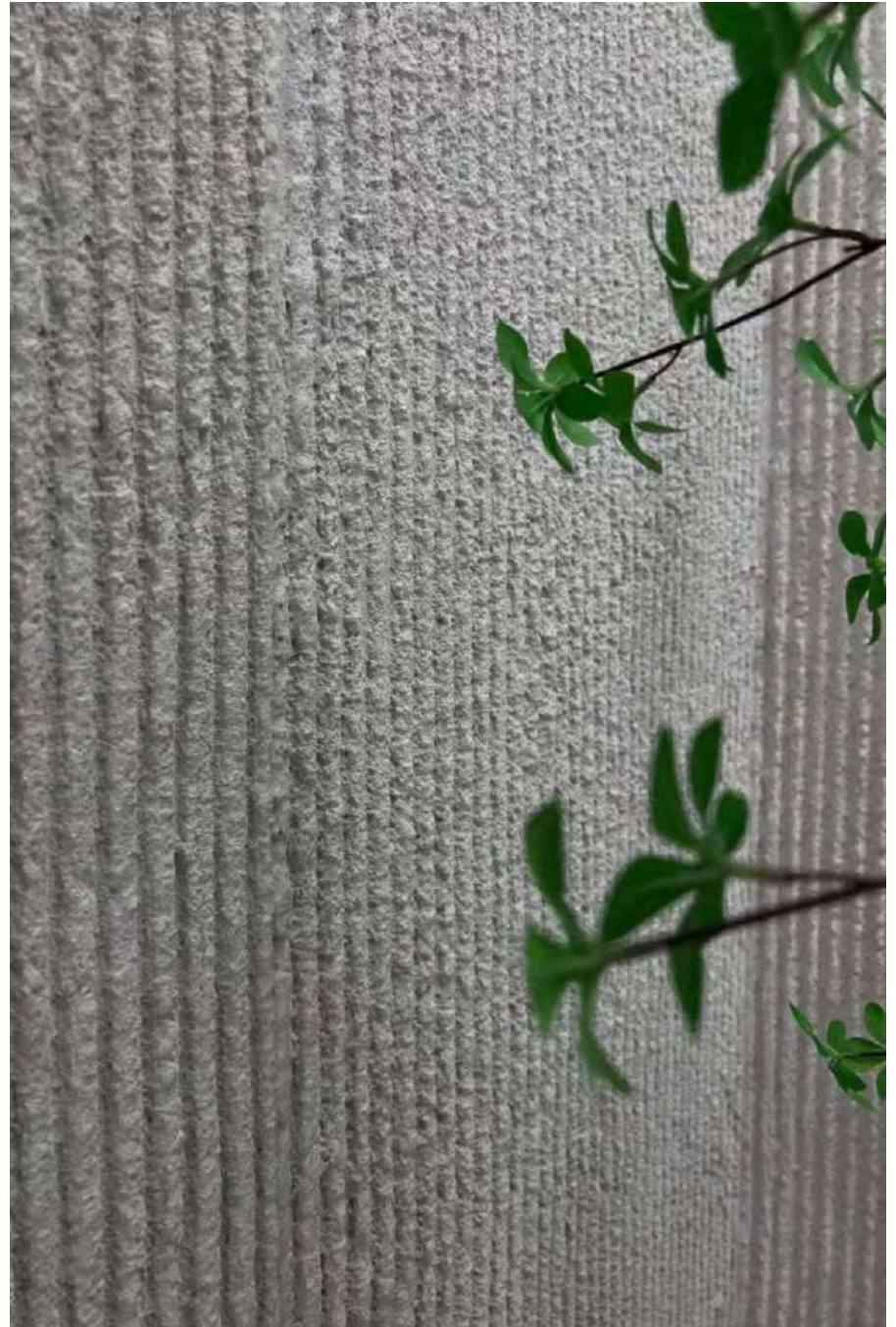


Beige 052



Dark grey 043

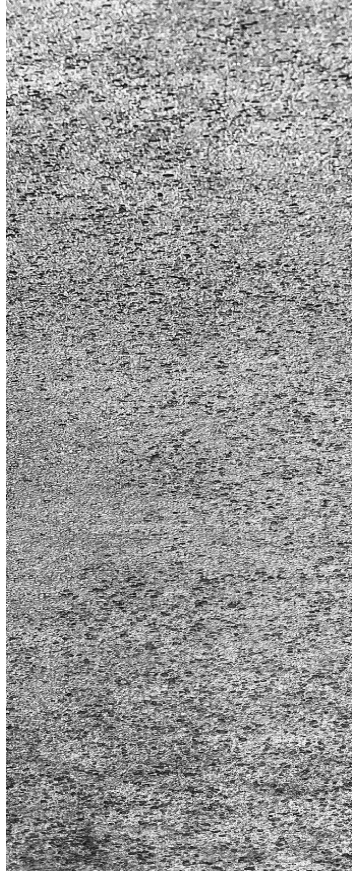




Foamed Aluminium Alloy Board

Size: 2400*1200mm/2400*600mm

Thickness: 3-5mm



Sliver



Golden





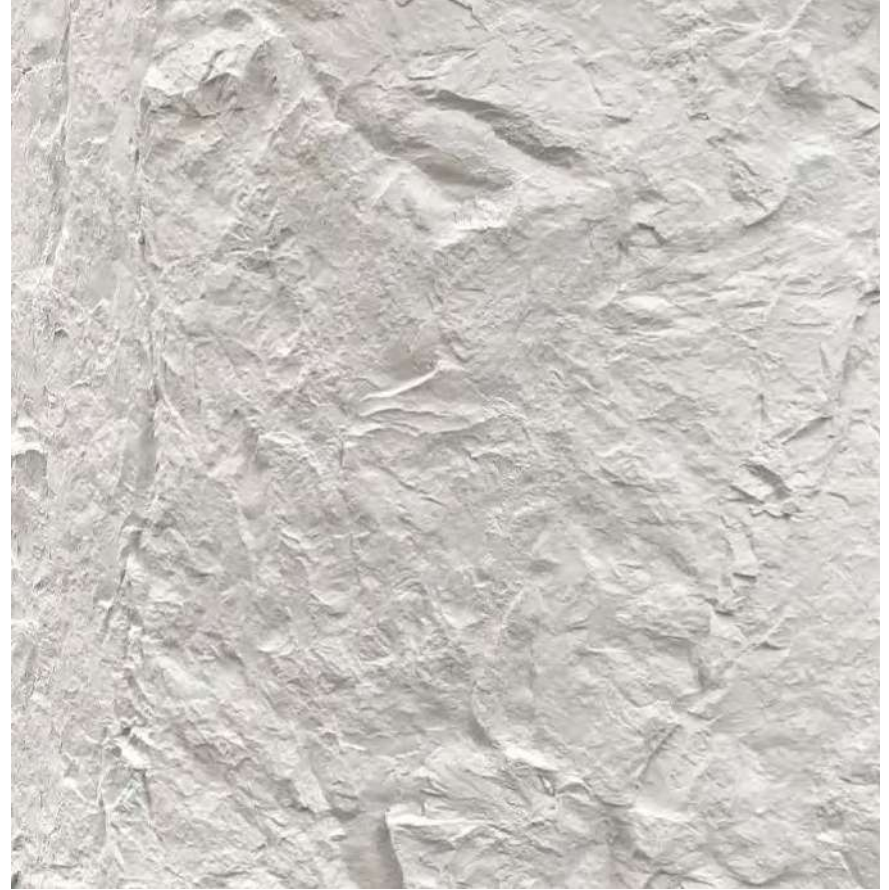
New Rock Cut Stone
Size: 3000*1145mm
Thickness: 5-8mm



Beige 052



Dark Grey 043





Wood Fence

Size: 2900*300mm

Thickness: 3-5mm



Red 127



Original 128





Cement Board

Size: 2380*1190mm/2380*590mm

Thickness: 3-5mm



Light Grey 031A



Medium Grey 038A





Travertine Oceanic

Size: 2400*1200mm/2400*600mm

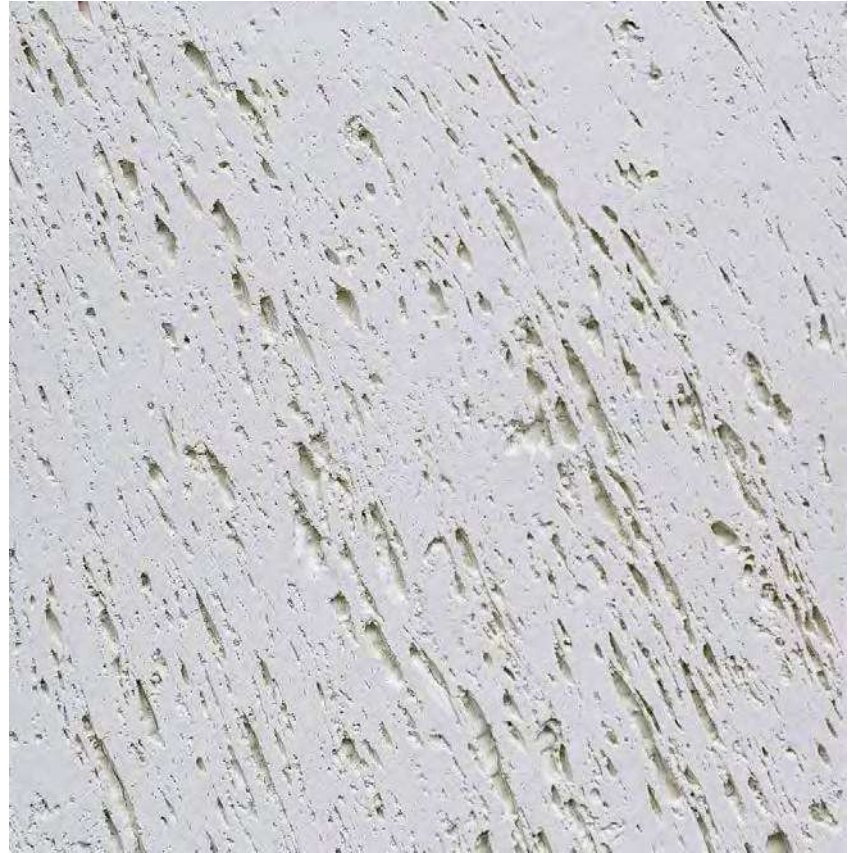
Thickness: 3-5mm

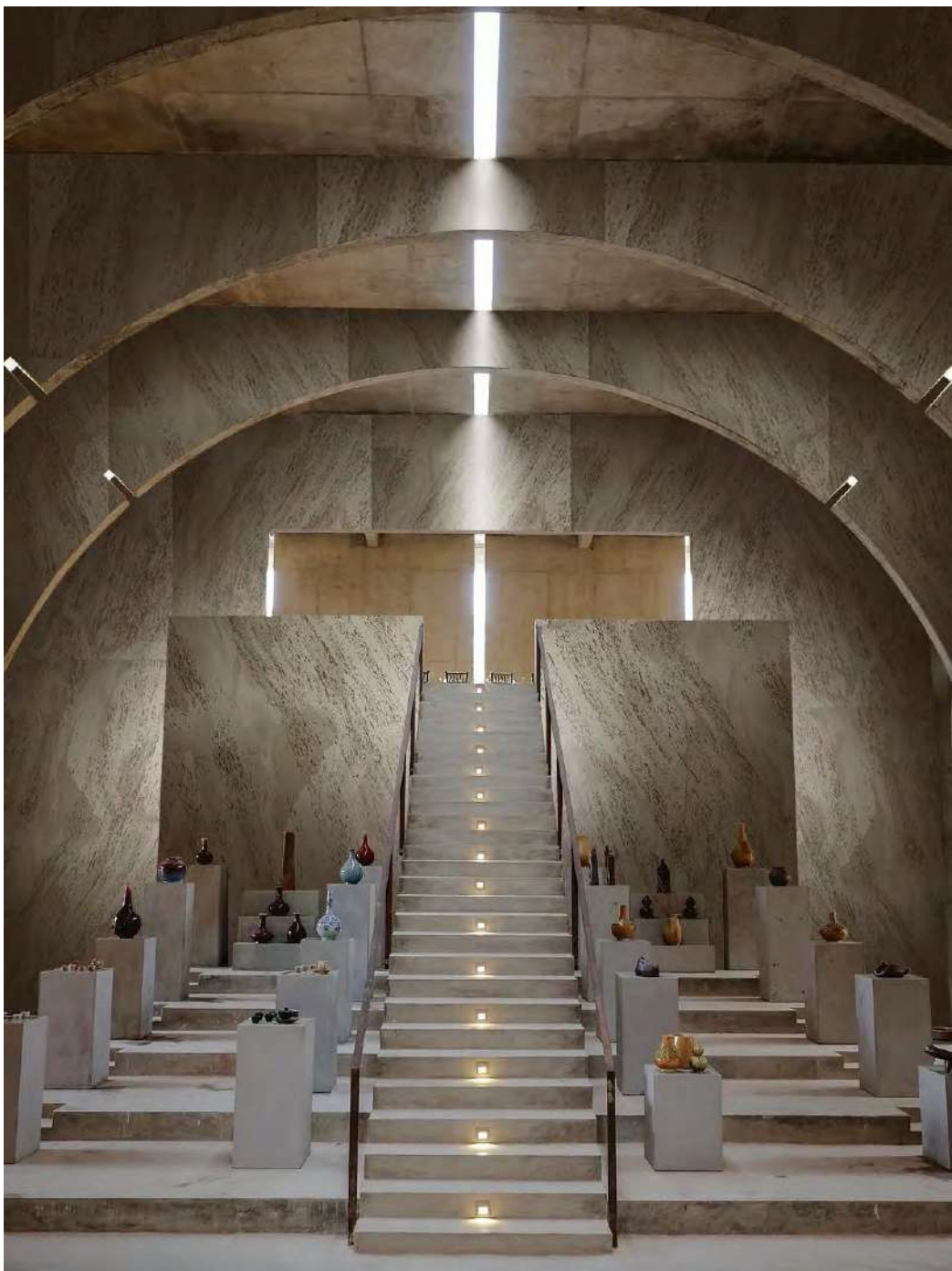


Gradient Grey 025052



Beige 052





Huge Travertine

Size: 2400*1200mm/2400*600mm

Thickness: 3-5mm



Beige 052



Pure White 050



Gradient Yellow 052053



Concrete 031Z



Beige 052



Moon Stone
Size: 3260*1200mm
Thickness: 4-8mm



Beige 052



Dark Grey 043



Deep Khaki 058



The image shows the exterior of a modern building. A large, rectangular wall with a light beige, textured surface is the central focus. The word "Merince" is printed in a dark, serif font on the left side of this wall. To the right, a vertical white pillar features the text "merince showroom" and "s1002015" in a smaller, blue, sans-serif font. The building is surrounded by green trees and foliage. The sky is bright, suggesting daytime.

Merince

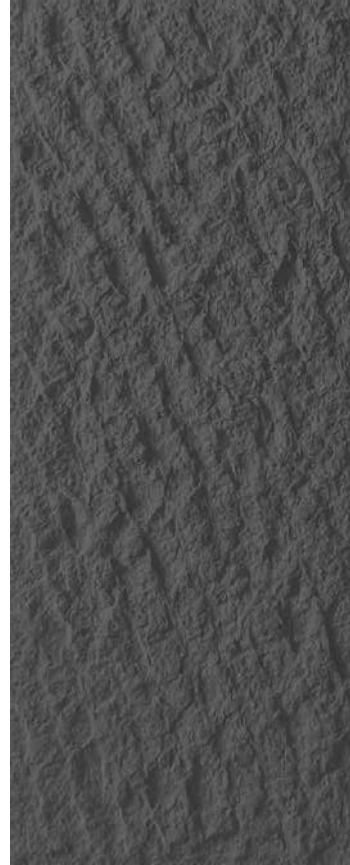
merince showroom
s1002015



Moonscape Stone
Size: 1660*600mm
Thickness: 4-8mm



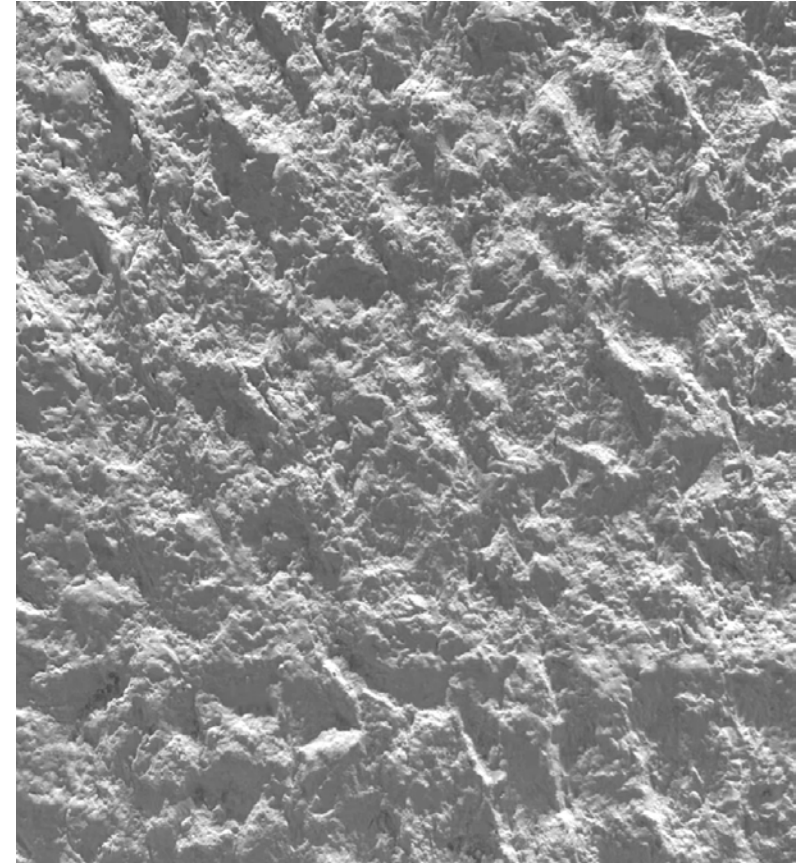
Beige 052



Dark Grey 043



Deep Khaki 058





Dacite

Size: 3040*1180mm

Thickness: 3-5mm

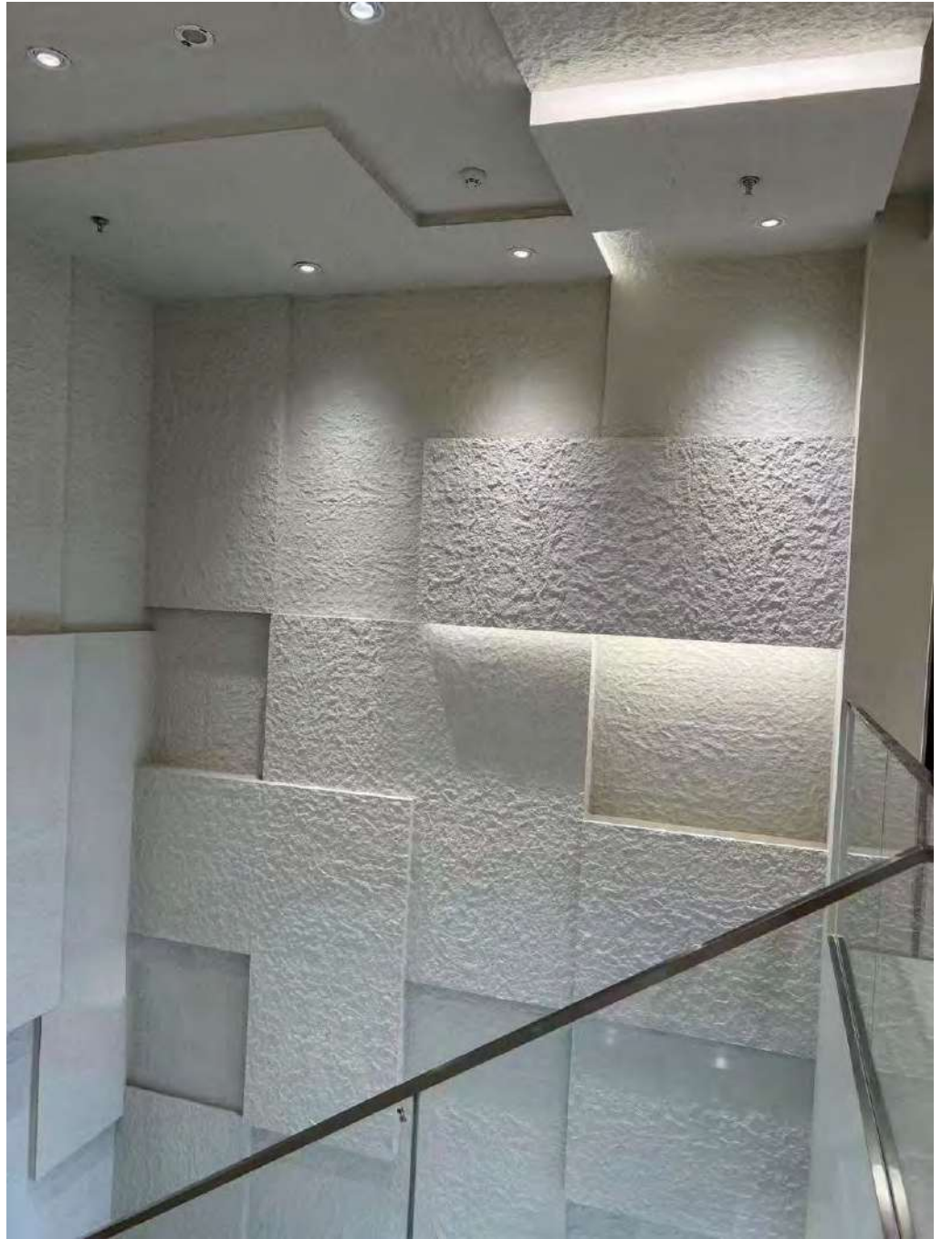


Beige 052

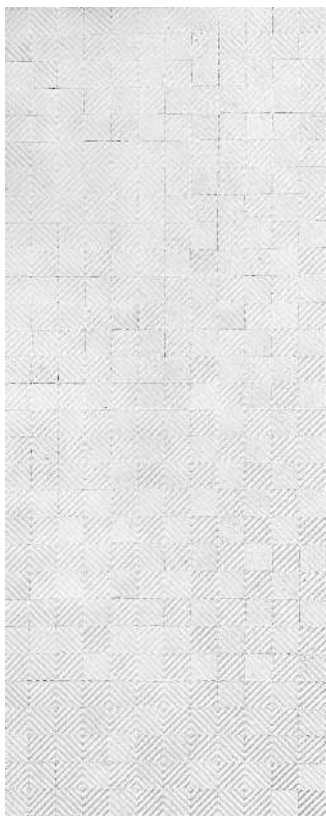


Dark Grey 043





Morocco Style
Size: 1500*600mm
Thickness: 3-5mm



Beige 052



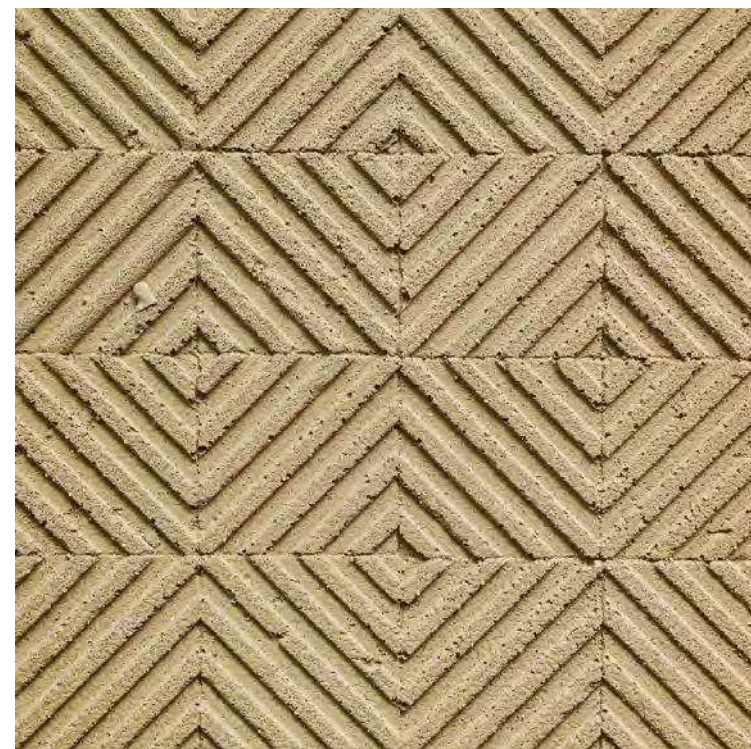
Khaki 056A

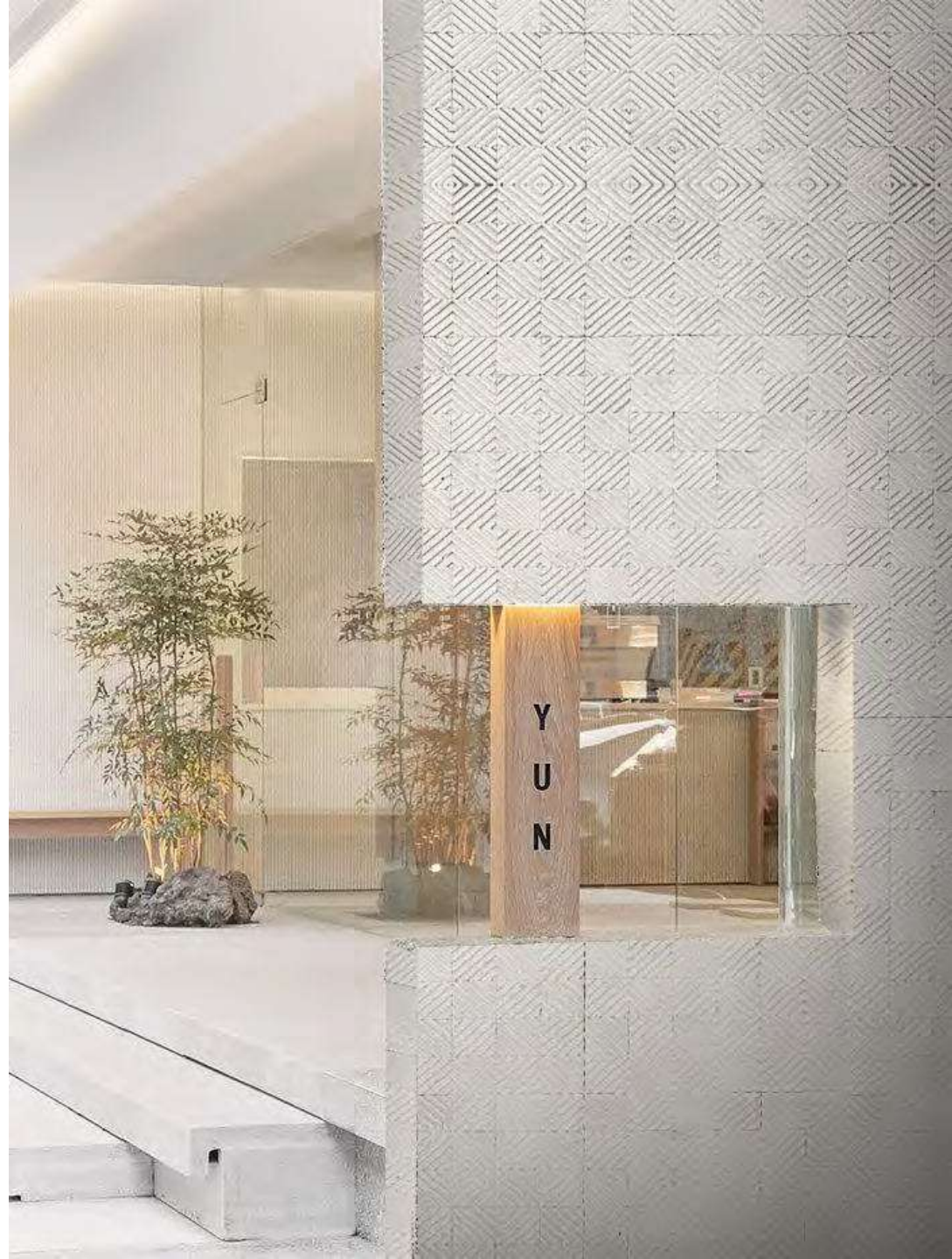


Jacinth 089



Grey 221





Wood-cement Board
Size: 3000*600mm
Thickness: 3-5mm

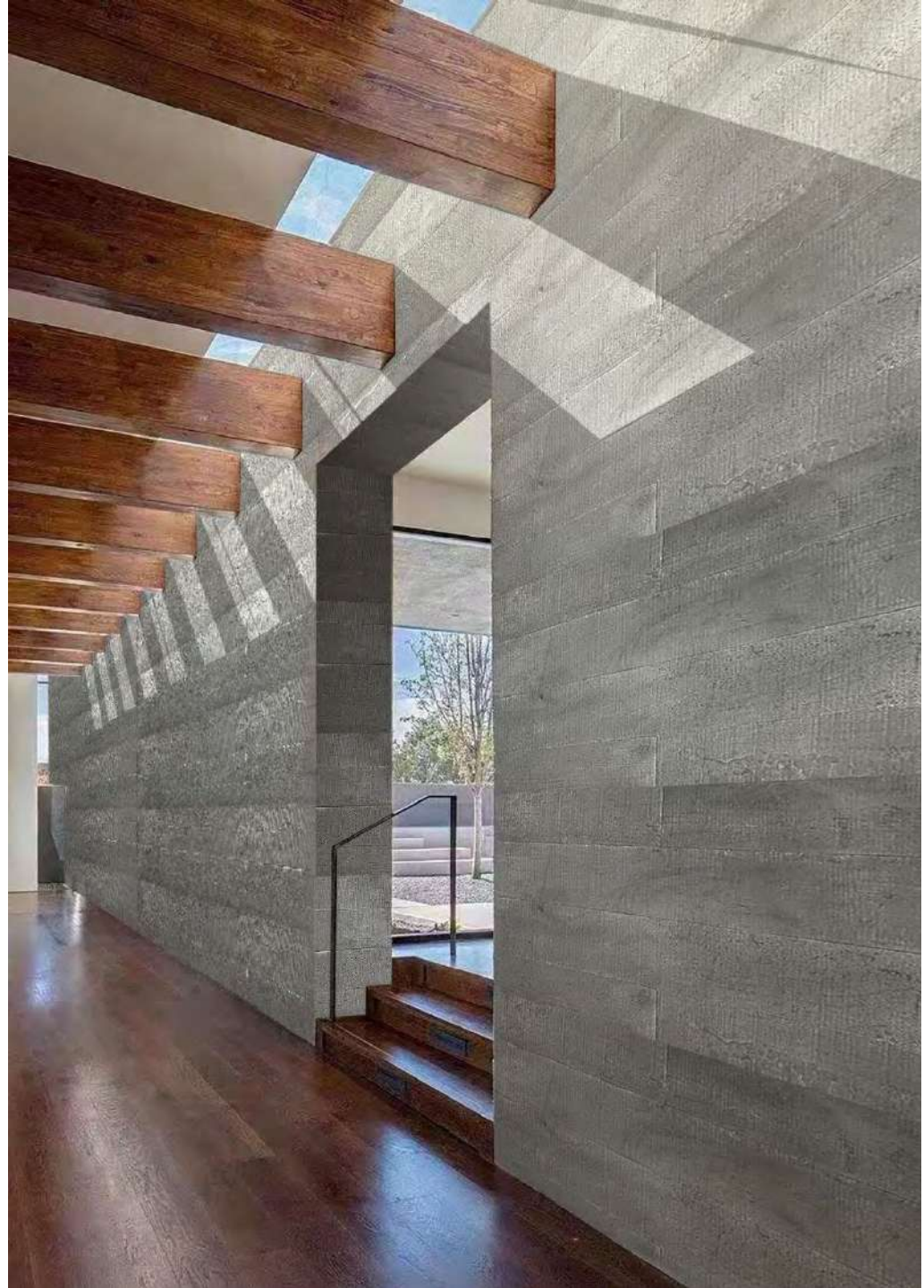


Ligth Grey 031



Medium Grey 038





Charcoal Burnt Wood Board

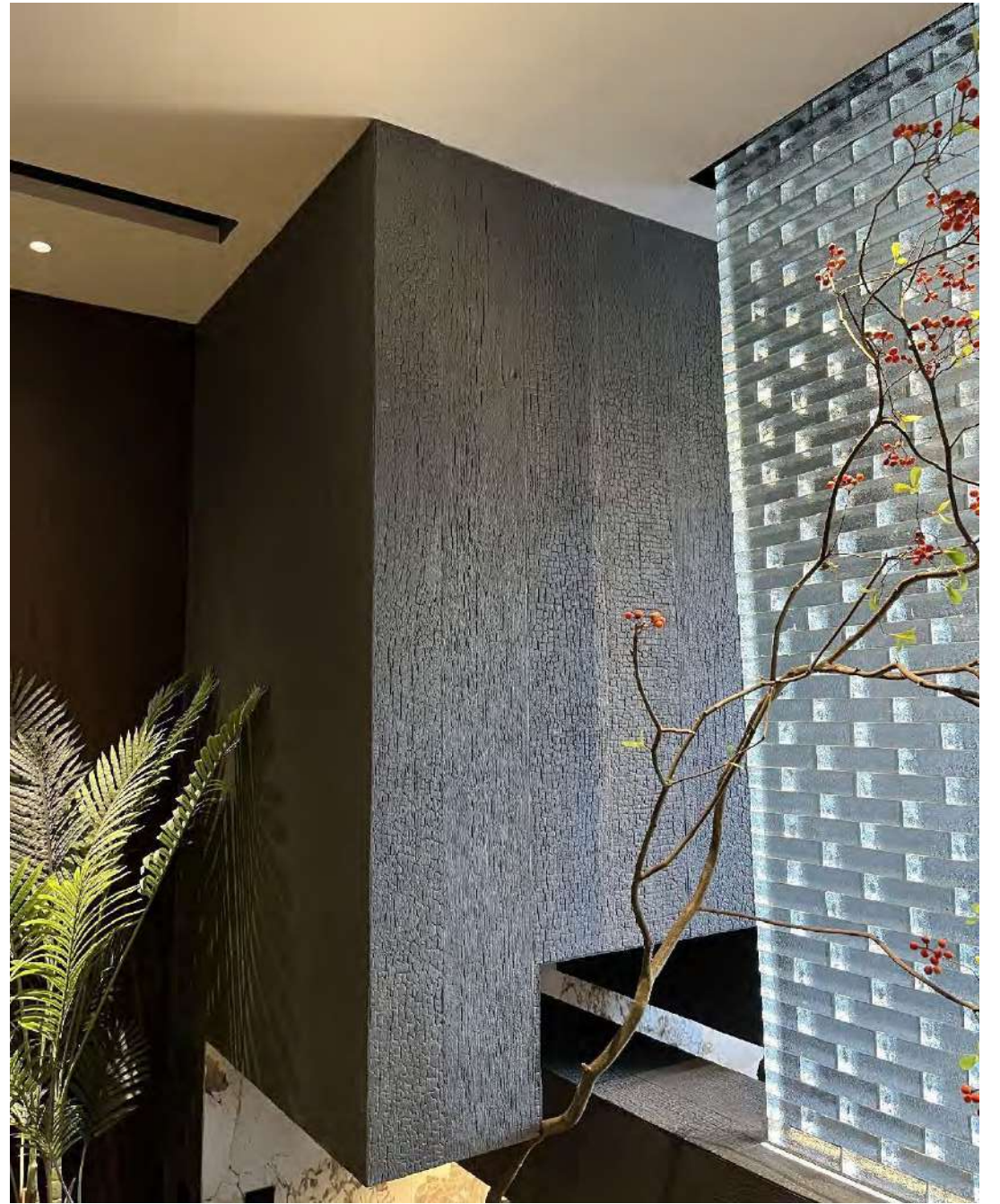
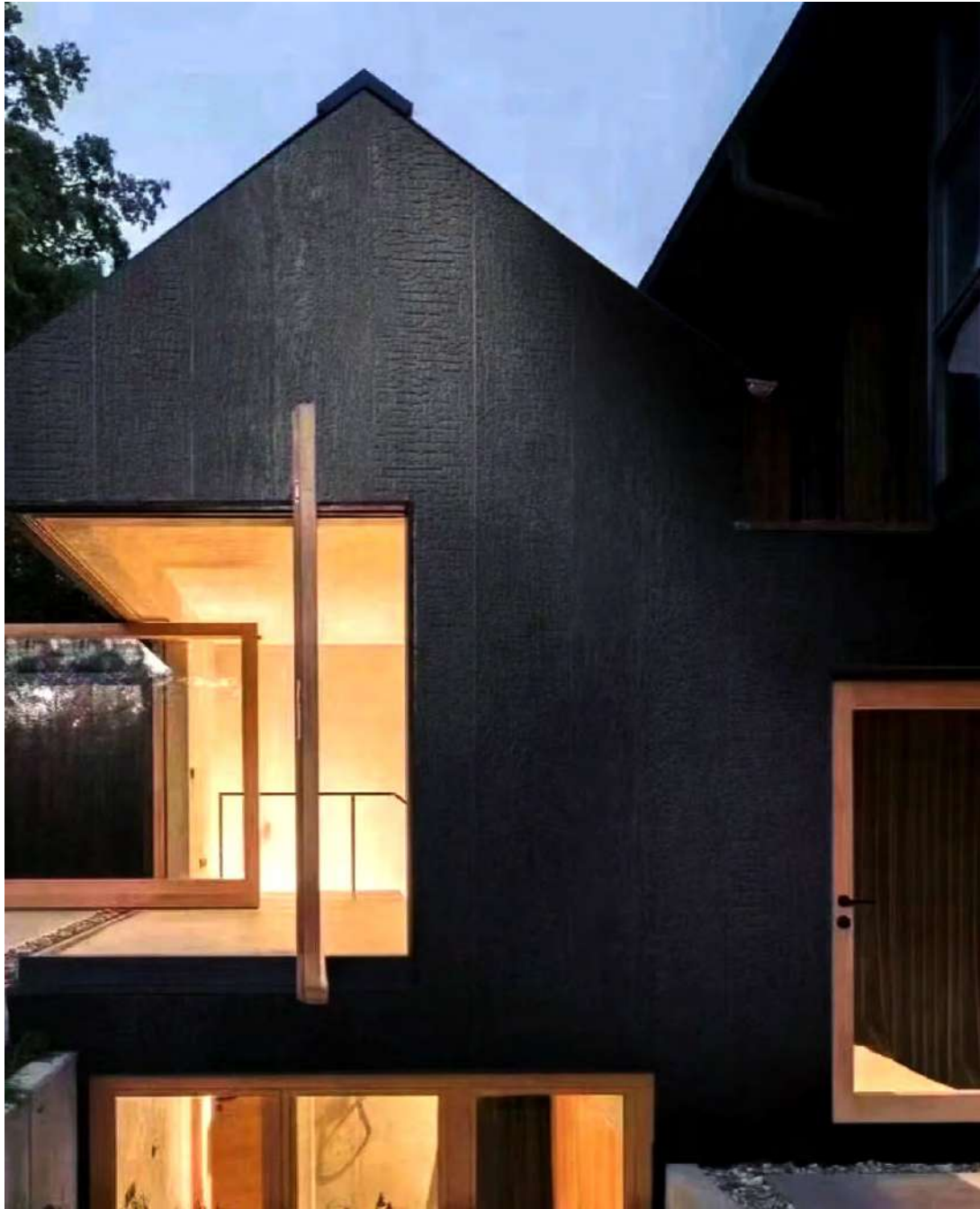
Size: 3040*580mm

Thickness: 3-5mm



Dark Grey 043





Cloud Valley Stone
Size: 3000*1100mm
Thickness: 4-8mm



Beige 052



Dark Grey 043



Deep Khaki 058





Travertine
Size: 600*1200mm
Thickness: 2.5-3.5mm



Pure White 050



Beige 052



Concrete 031Z



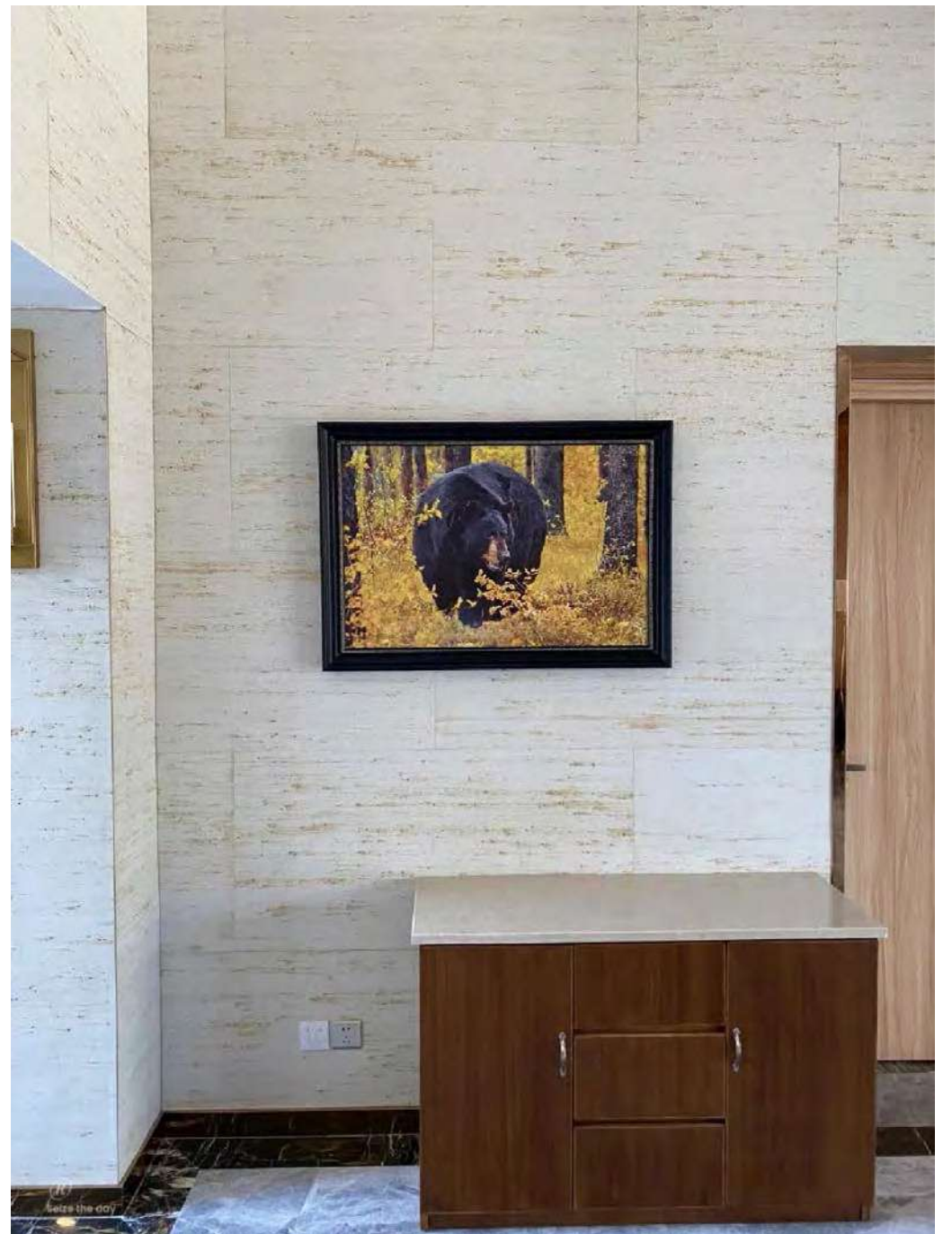
Gradient Yellow 052053



White Golden 052KZ



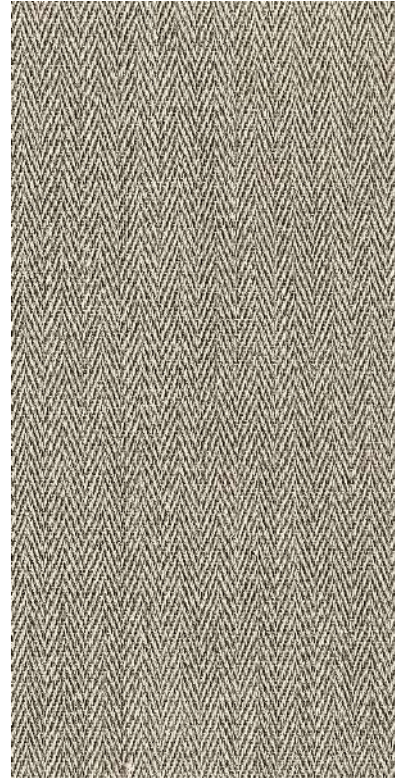
Grey Golden 031YZD



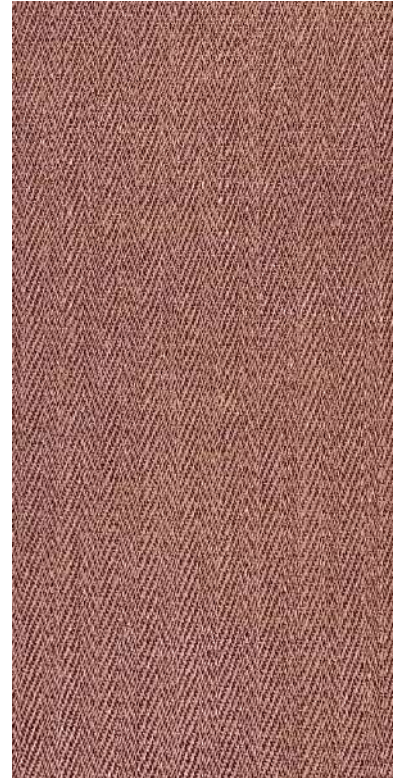
Weaving
Size: 600*1500mm
Thickness: 3-5mm



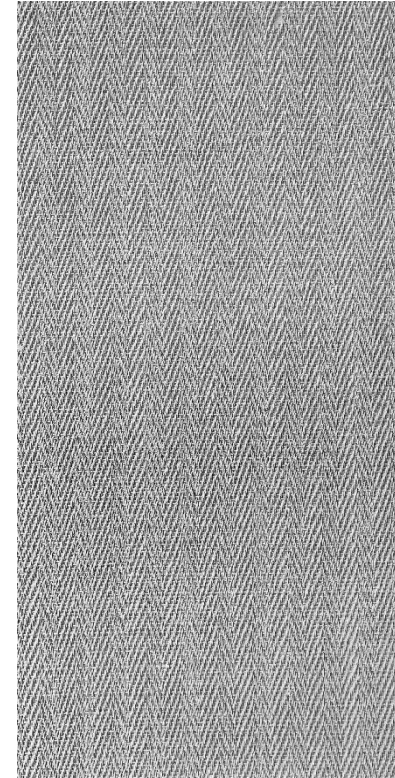
Beige 052



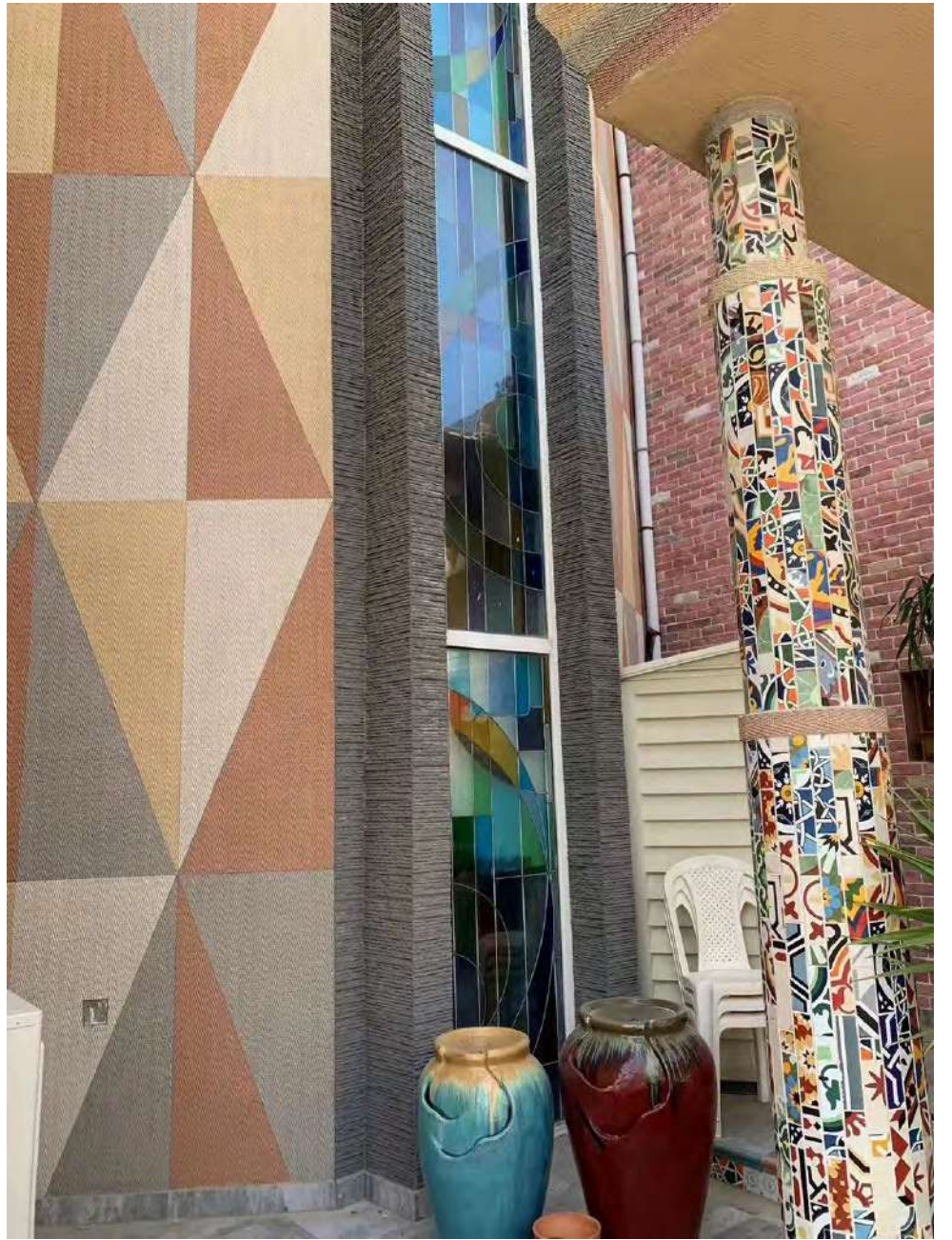
Khaki 056



Jacinth 089



Grey 221



Rough Granite
Size: 600*1200mm
Thickness: 3-5mm



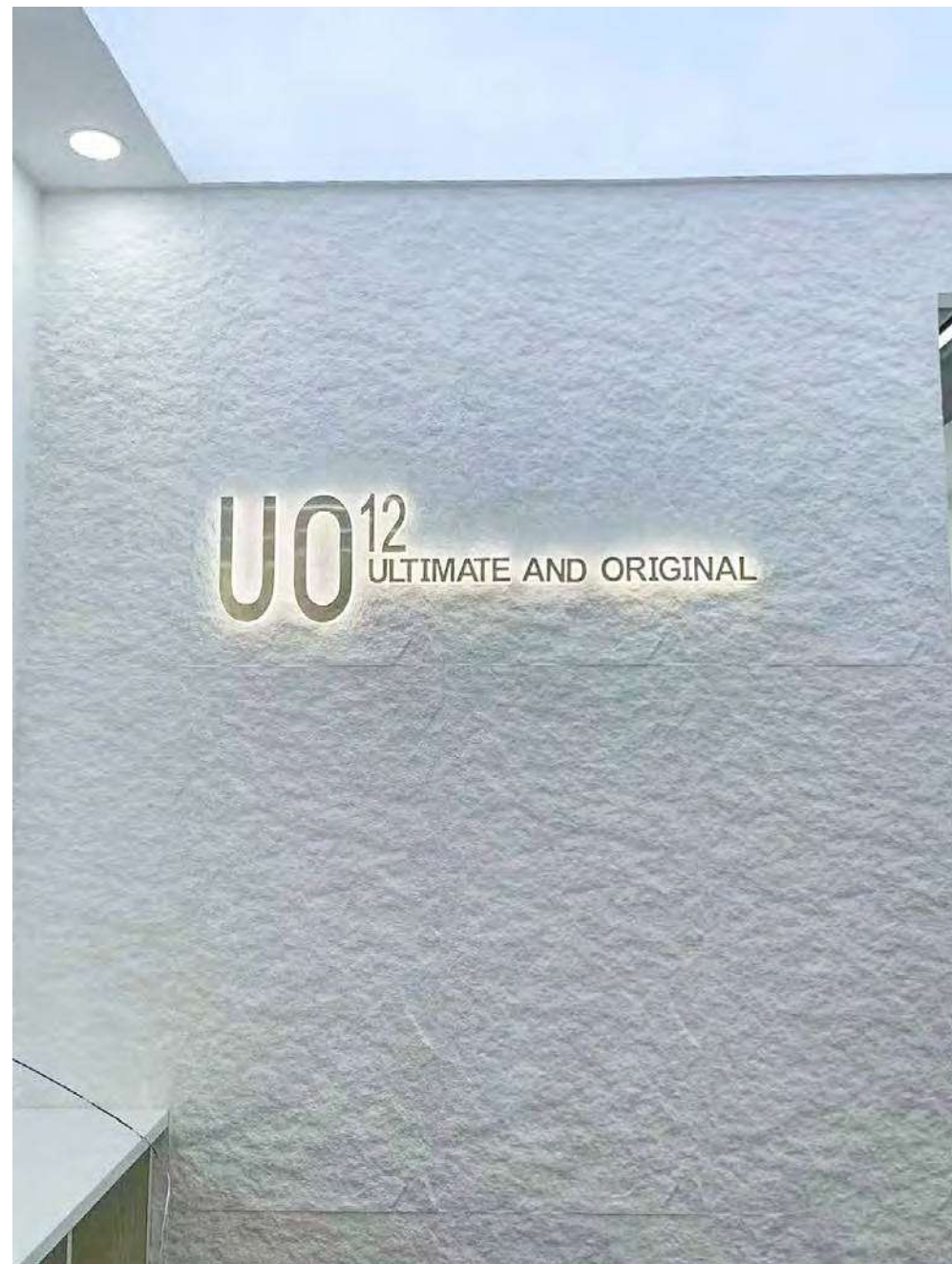
Beige 052



Pure White 050



Dark Grey 043



Rockcut Stone
Size: 600*900mm
Thickness: 3-5mm



Beige 052



Dark Grey 043



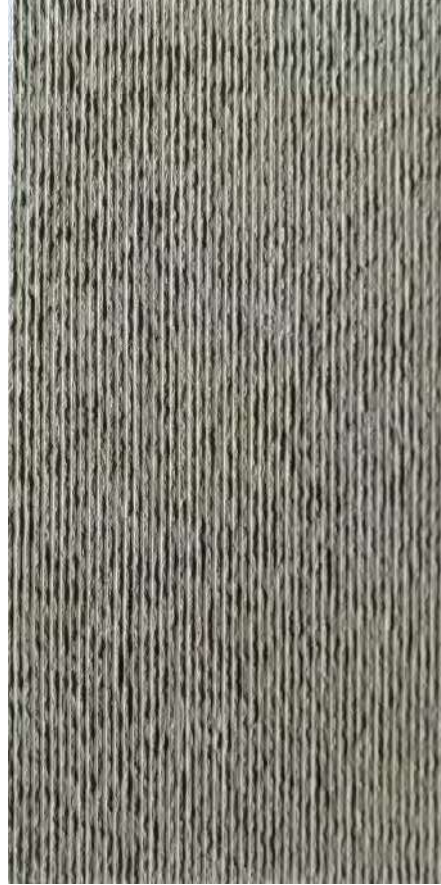
Cut Stone

Size: 600*1200mm

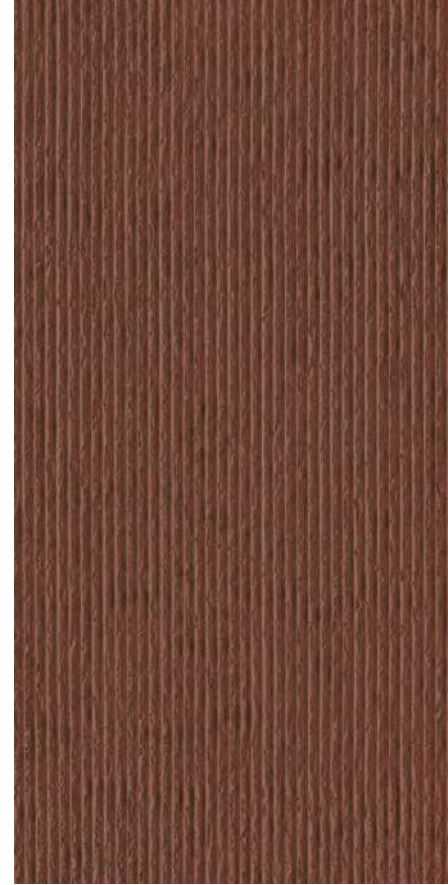
Thickness: 3-5mm



Beige 052



Grey 221



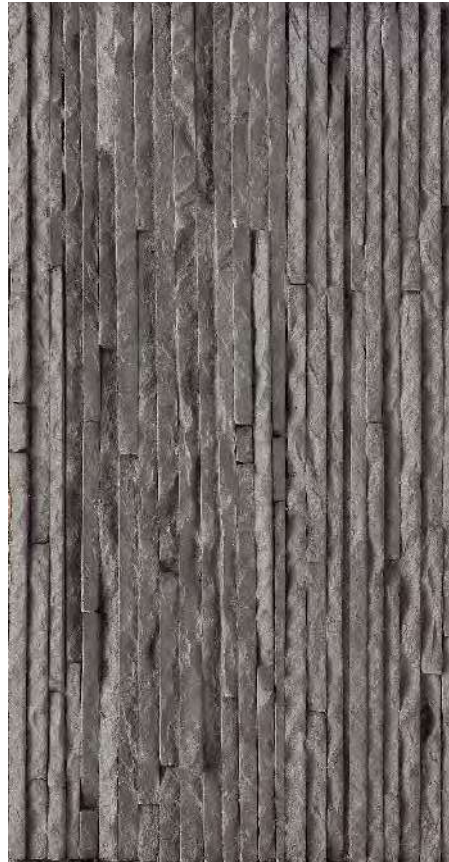
Red 362



Muretto Stone
Size: 600*300mm
Thickness: 3-5mm



Beige 052



Light Grey 221



Dark Grey 043



Age Stone

Size: 600*1200mm

Thickness: 3-5mm



Beige 052



Khaki 056A



Medium Grey 038



Gradient Yellow 052053



Gradient Grey 052038



Rammed Earth Board
Size: 580*2400mm
Thickness: 3-5mm



Beige 052



Grey White 030



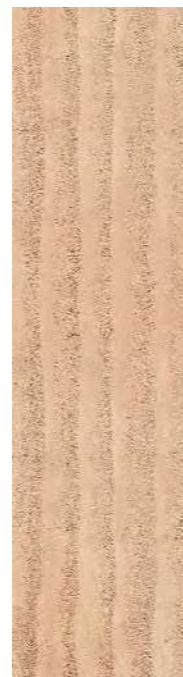
Light Grey 031



Dark Grey 043



Light Yellow 053B



Khaki 056B



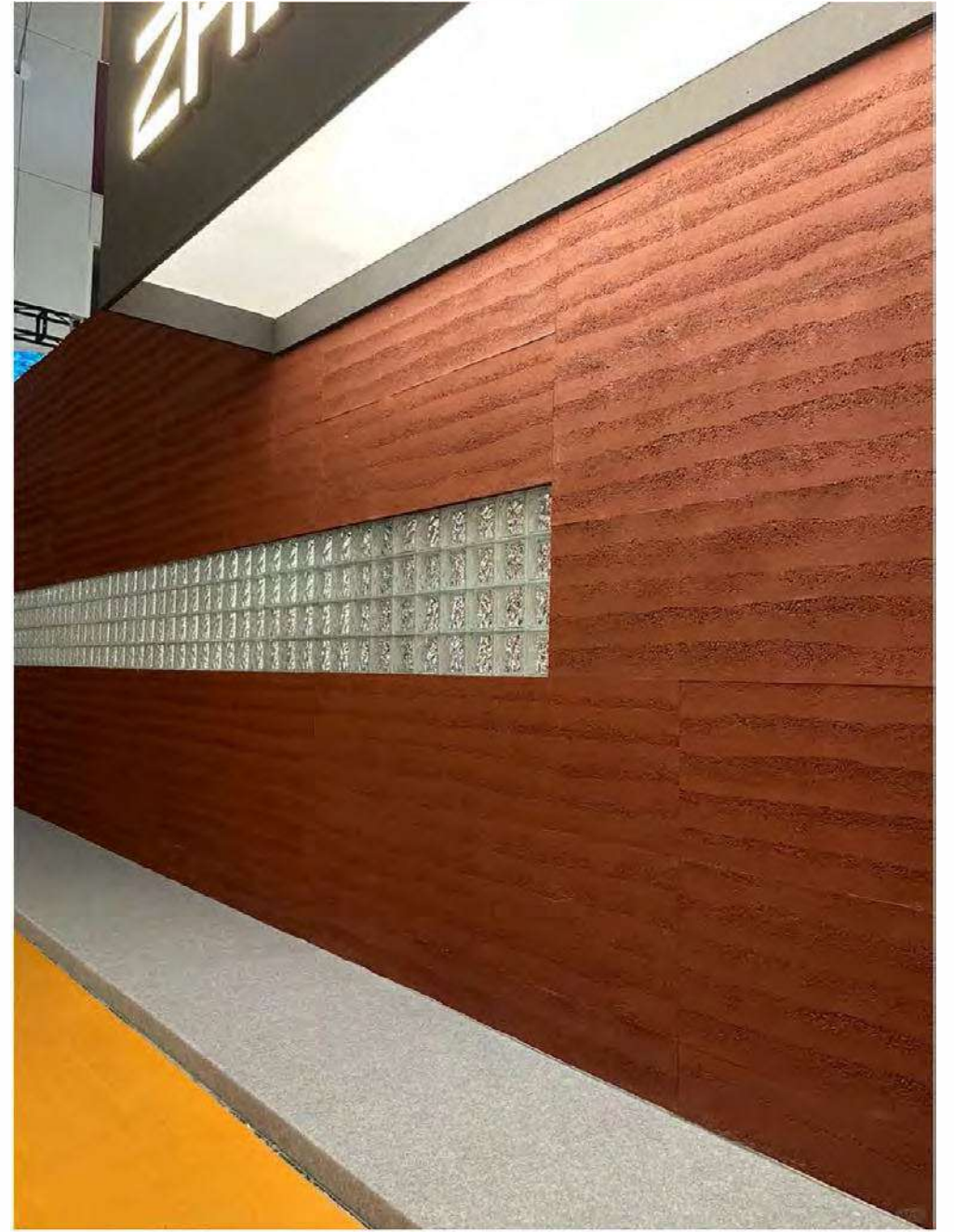
Brown Red 122



Watermelon Red 121



Gradient Color 101



Gobi Rammed Earth Board
Size: 1200*3000mm
Thickness: 3-5mm



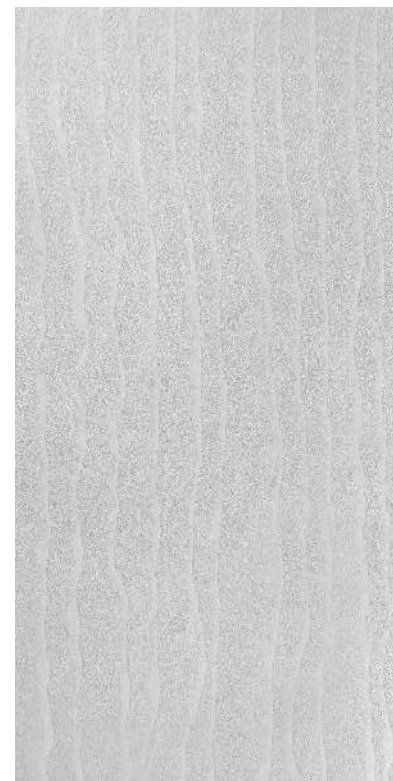
A102



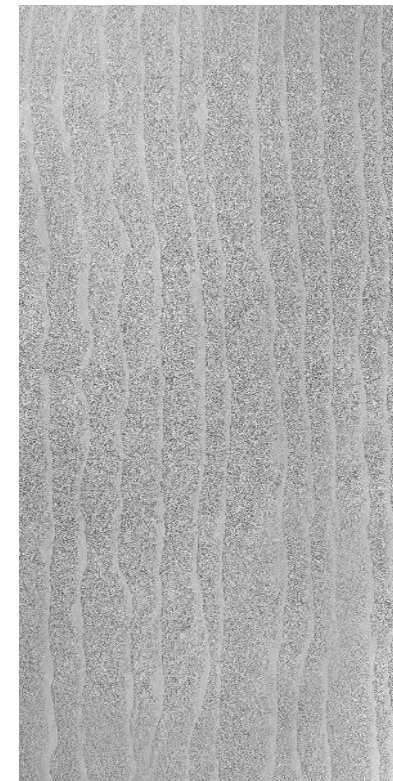
B103



C104

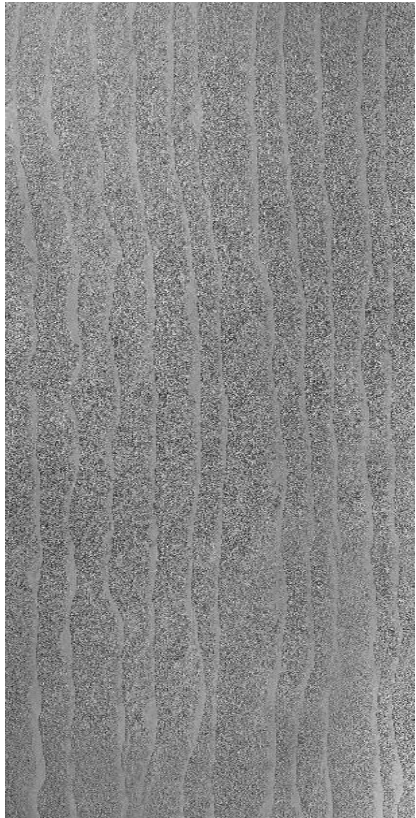


Beige 052

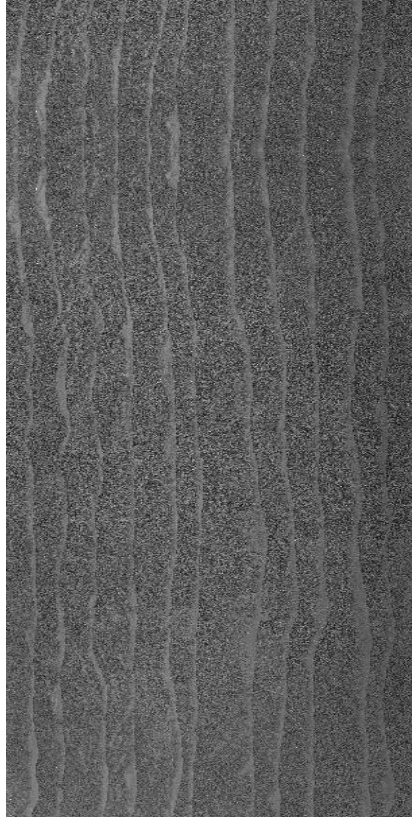


Light Grey 031

Gobi Rammed Earth Board
Size: 1200*3000mm
Thickness: 3-5mm



Medium grey 038



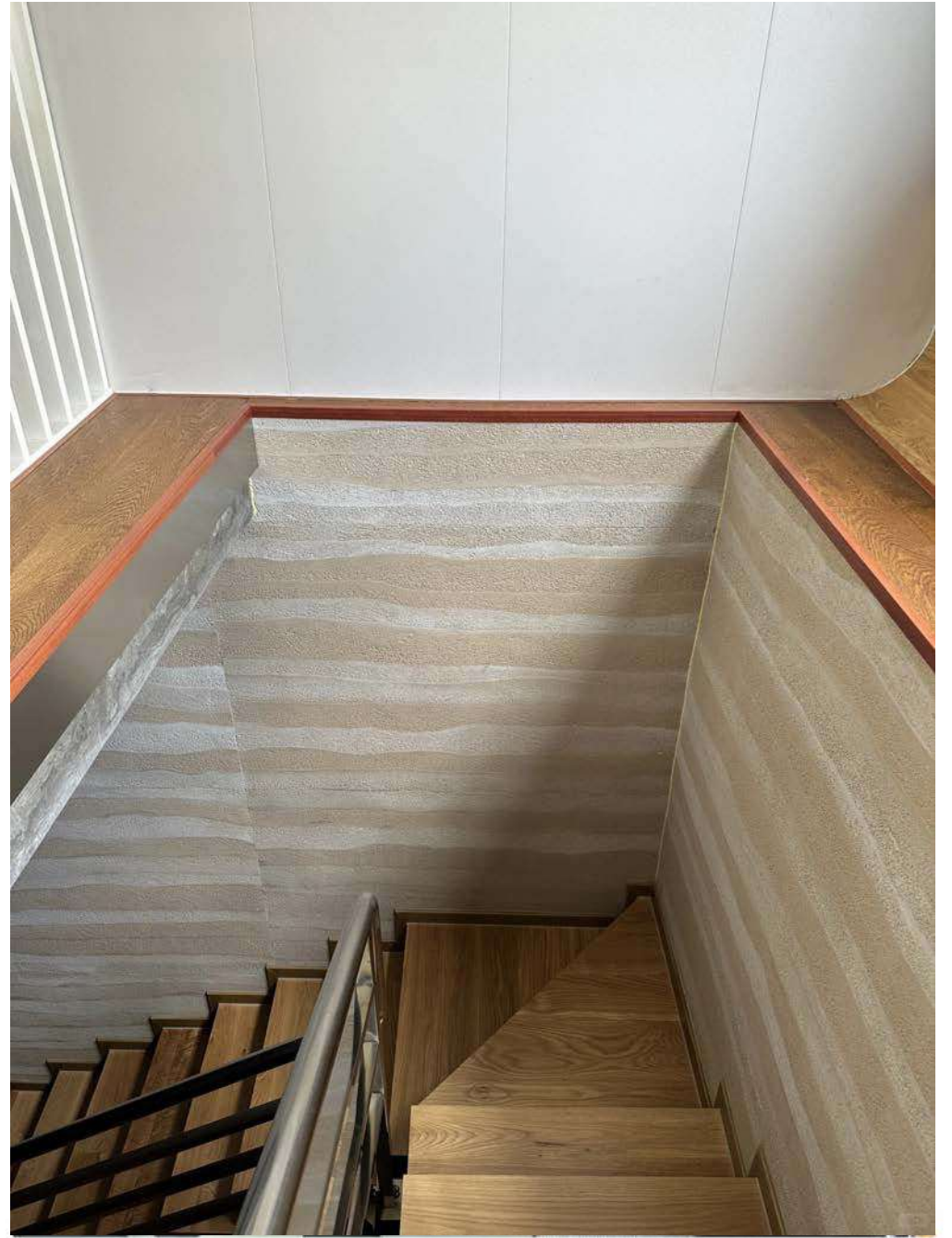
Dark Grey 043



Brown Red 122



Yellow 054B



Rampart Rammed Earth Board
Size: 600*3000mm
Thickness: 3-5mm



Beige 052



Grey White 030



Light Grey 031



Dark Grey 043



Light Yellow 053B



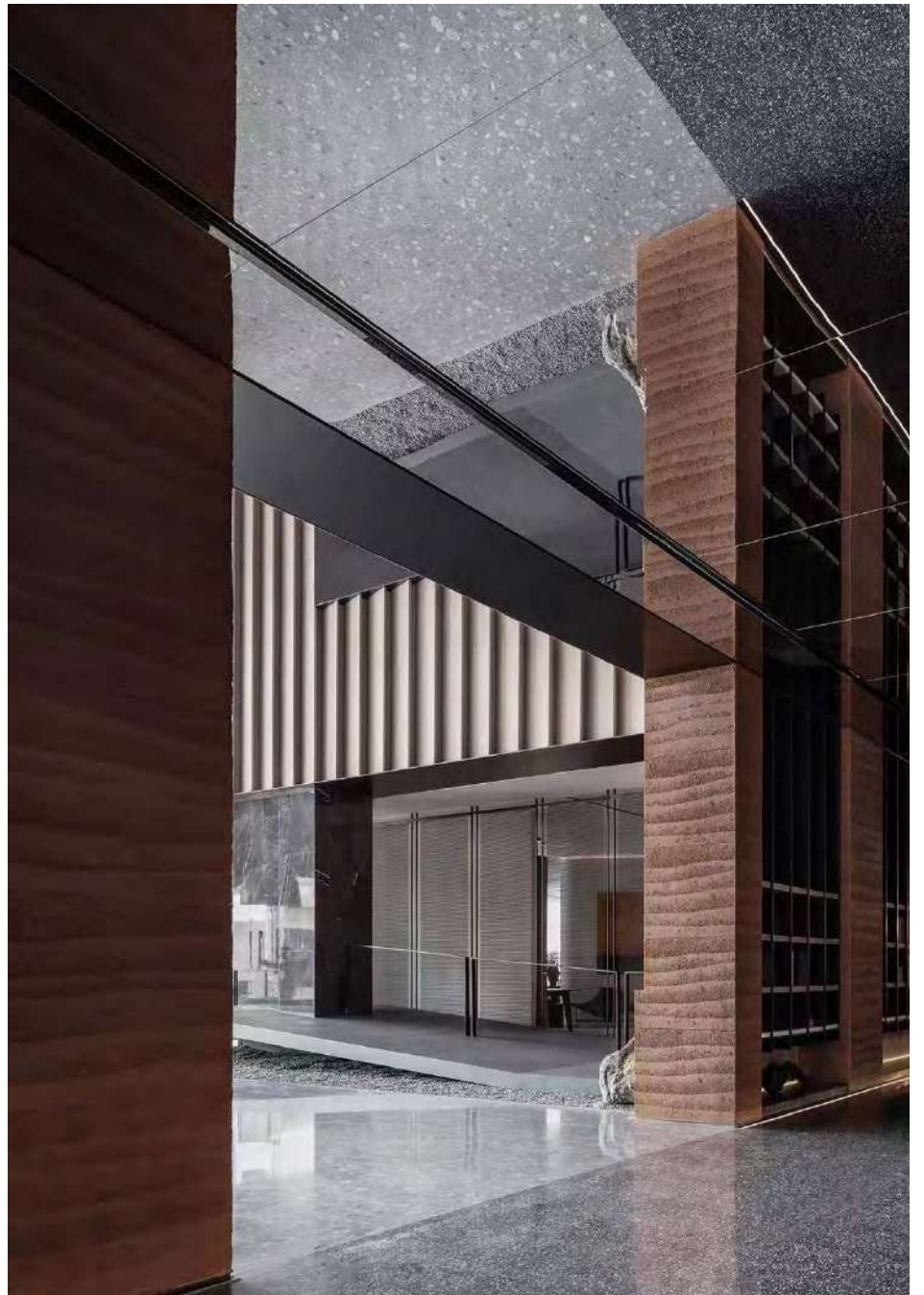
Khaki 056B



Brown Red 122



Watermelon Red 121



遗迹夯土板 Relic Rammed Earth Board

尺寸/Size: 1180*2980mm

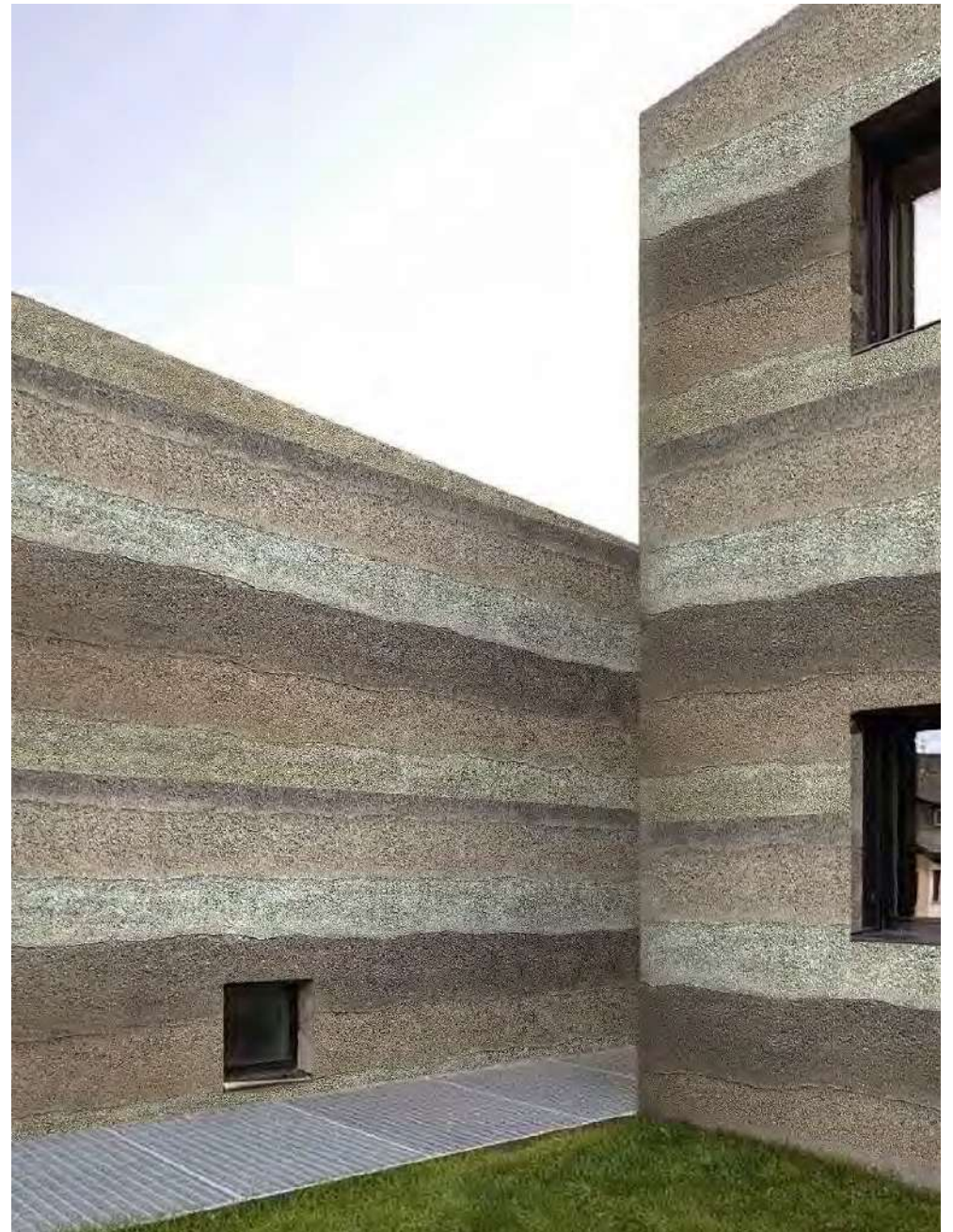
厚度/Thickness: 3-5mm



中灰色/Medium Grey 038



窑变灰色/Gradient Grey 105



Cave Rammed Earth Board

Size: 600*3000mm

Thickness: 3-5mm



Light Grey 031



Dark Grey 043



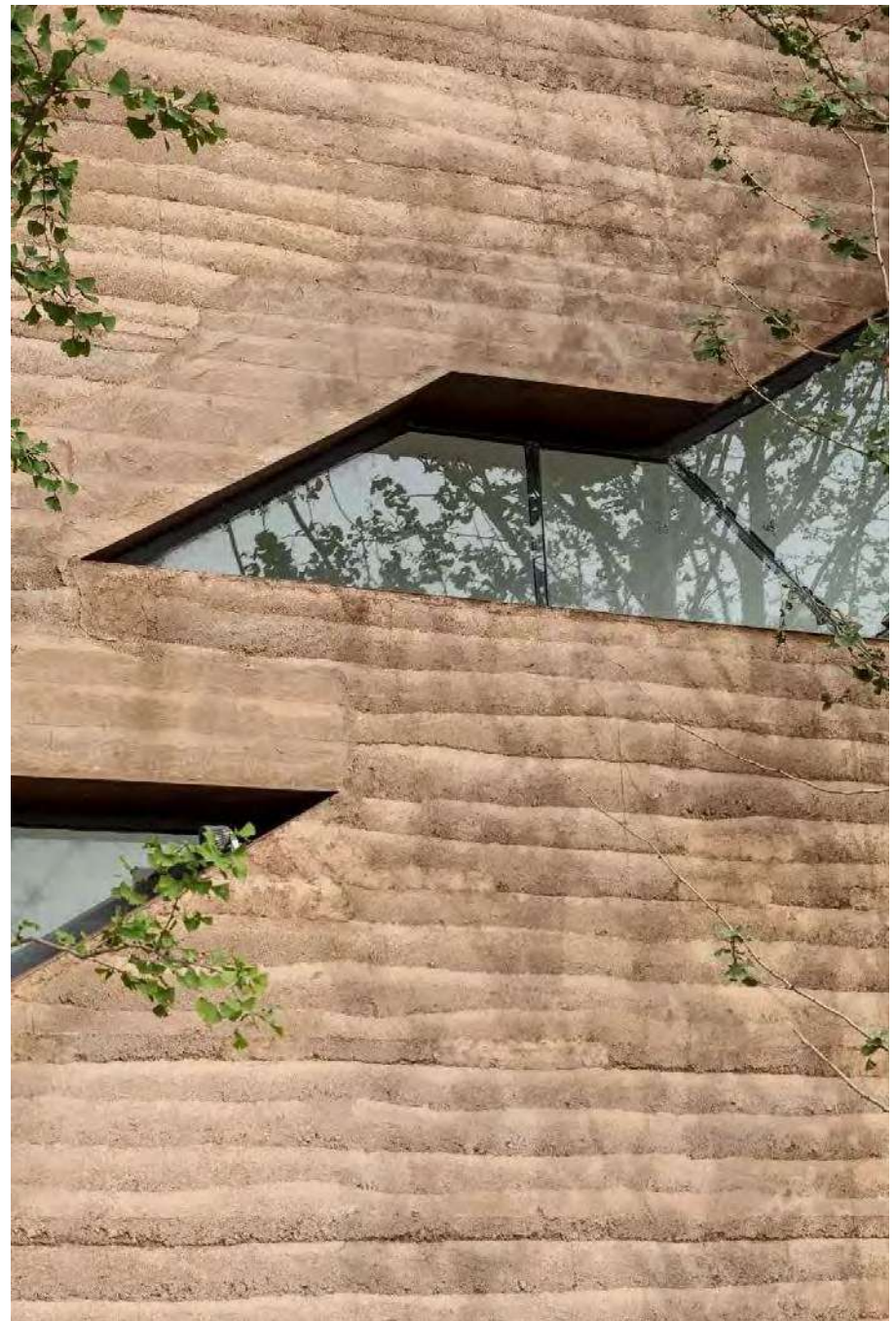
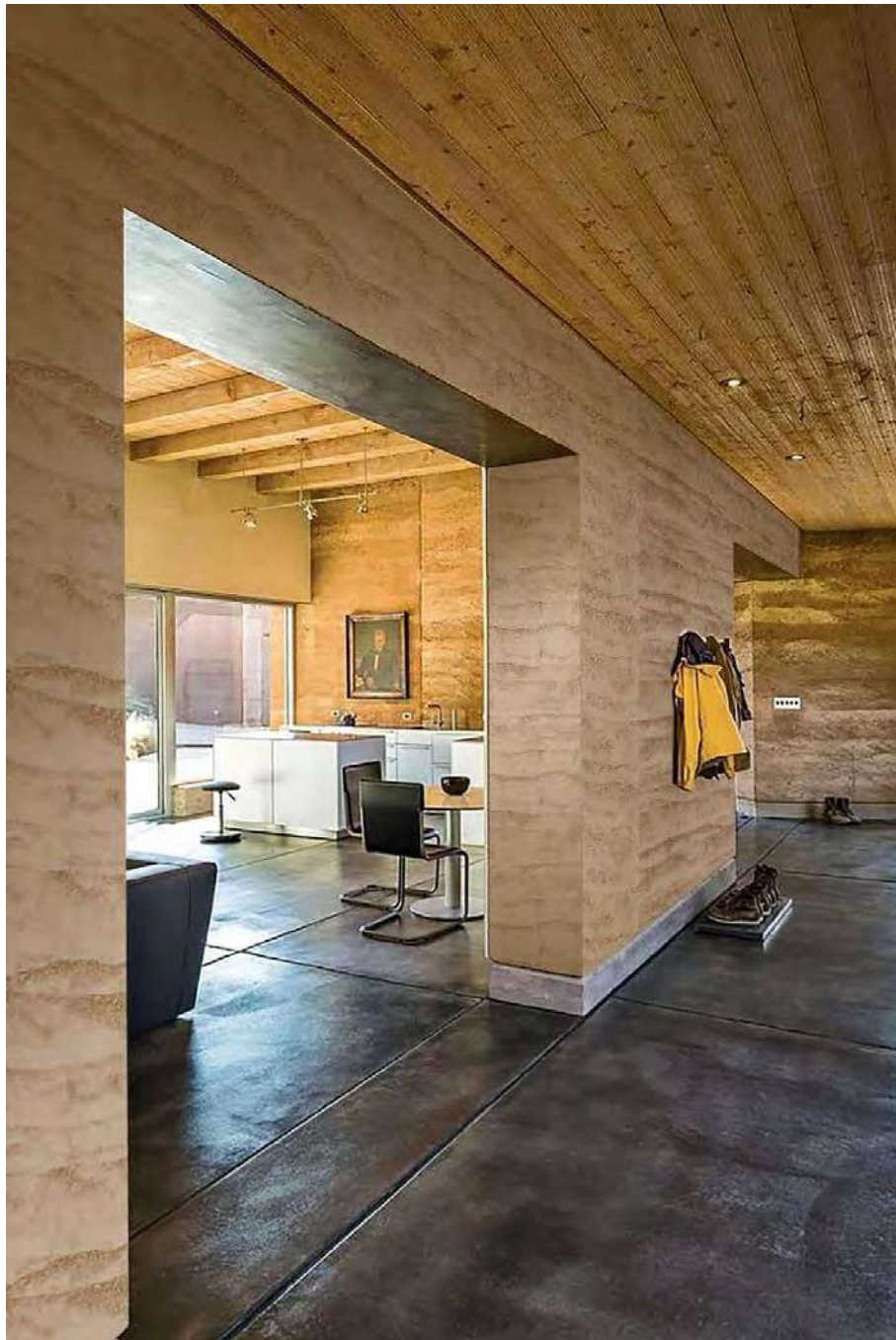
Light Yellow 053B



Khaki 056B



Brown Red 122



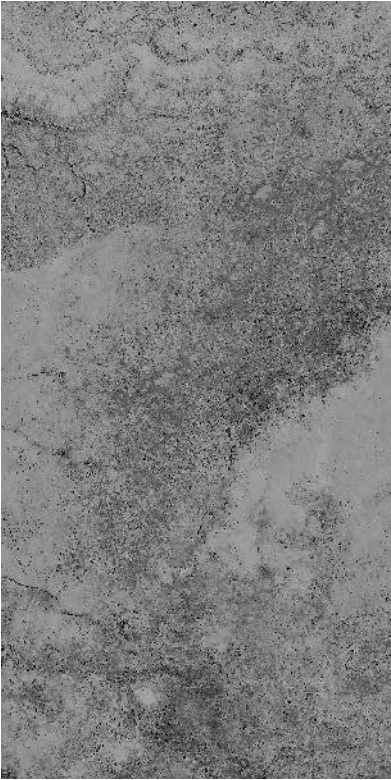
Dolomitic Travertine

Size: 600*1200mm

Thickness: 2.5-3.5mm



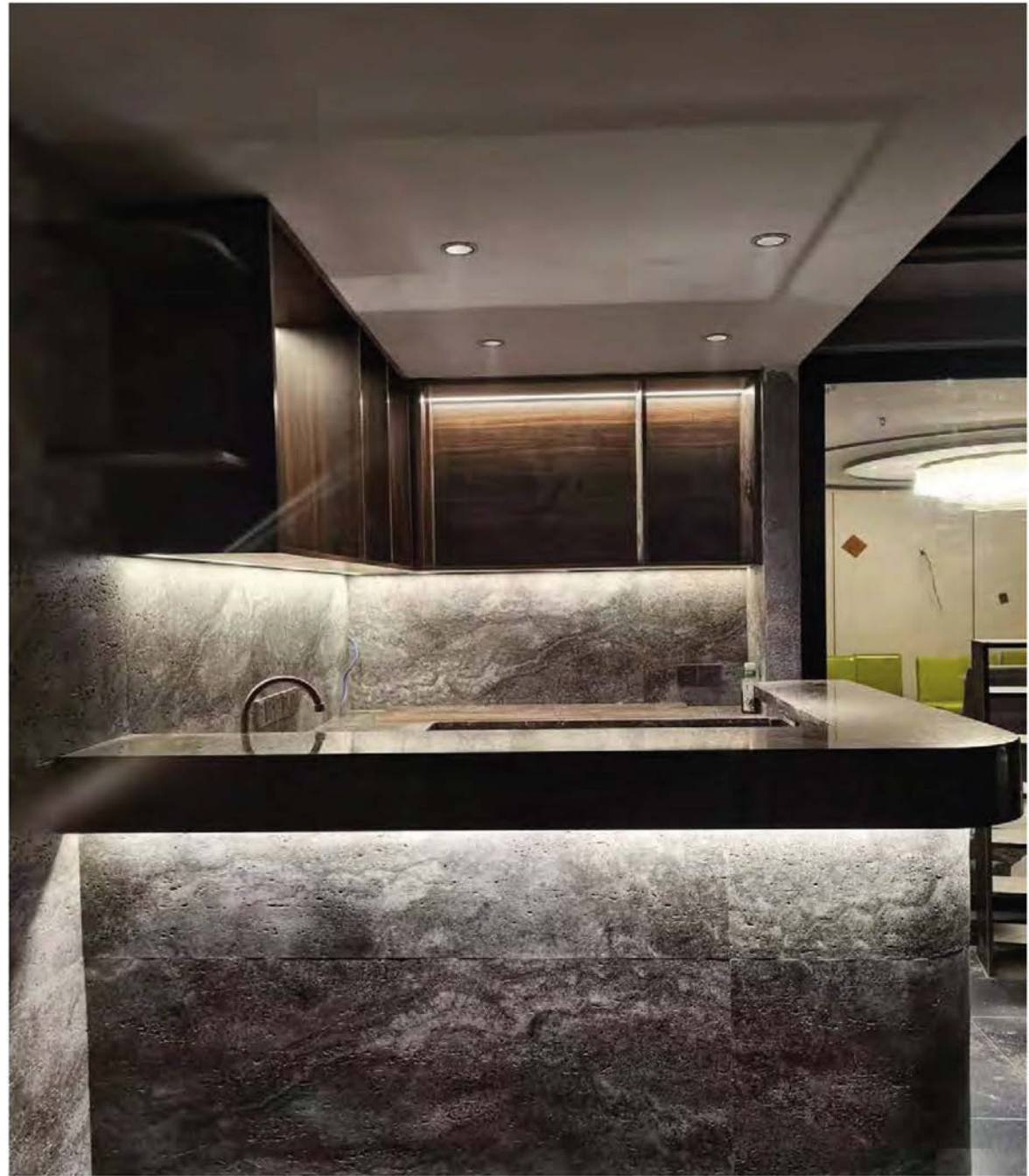
Claybank



Dark Grey



Andean White



Linear Travertine
Size: 600*1200mm
Thickness: 2.5-3.5mm



Claybank



Light Grey



Roman yellow



Romanite

Size: 600*1200mm

Thickness: 2.5-3.5mm



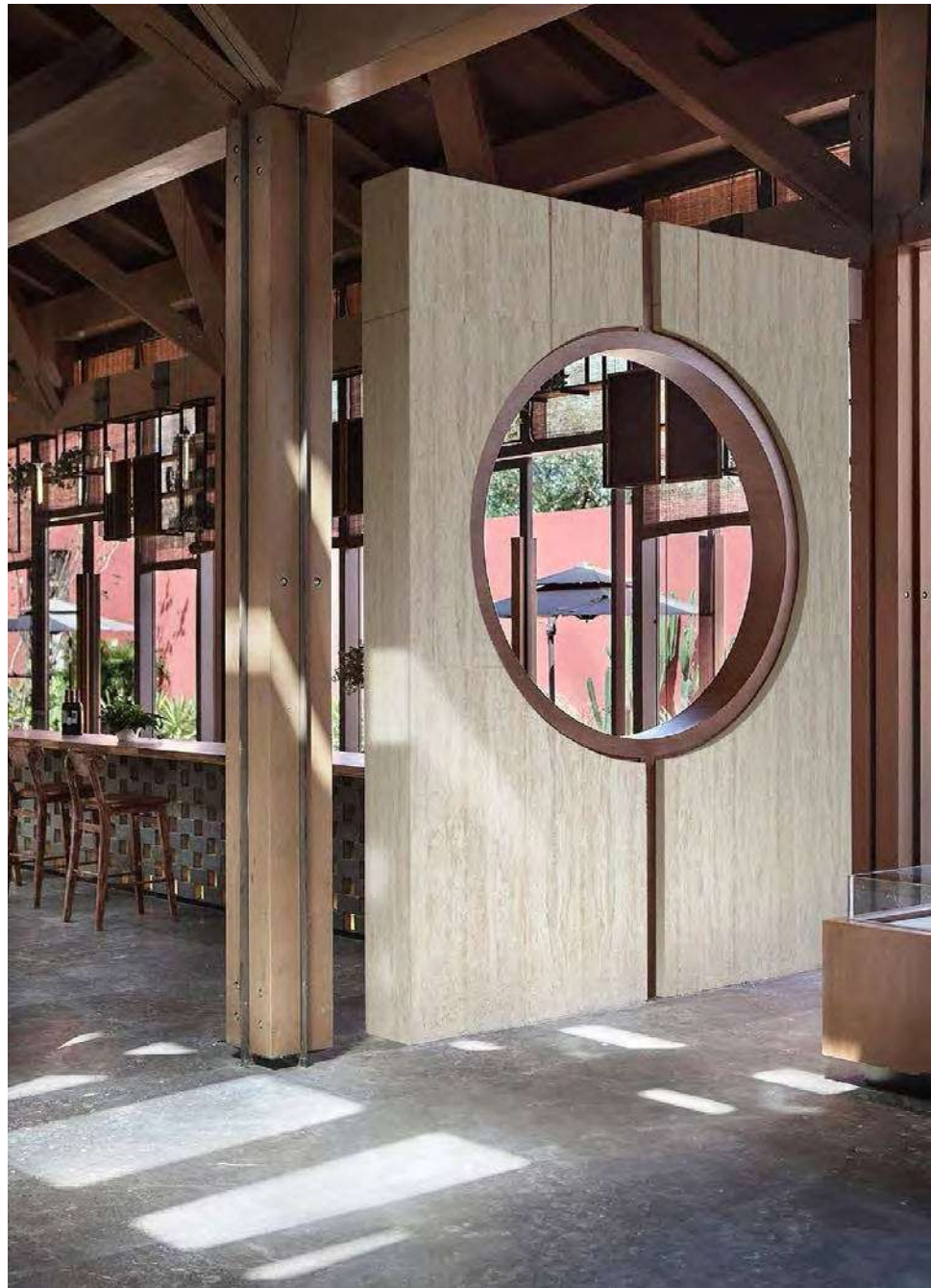
Cloudy Yellow



Cloudy White



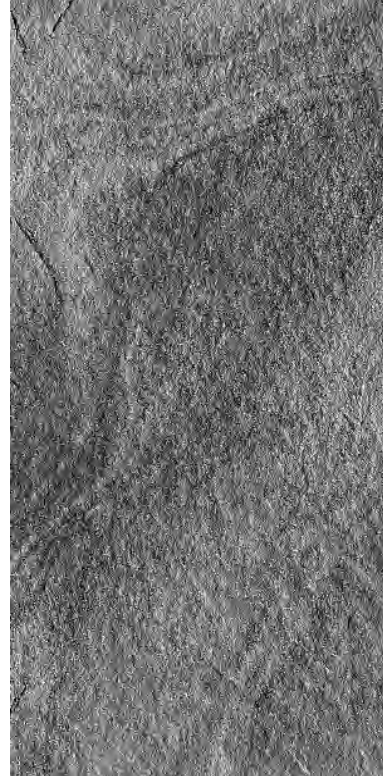
Cloudy Grey



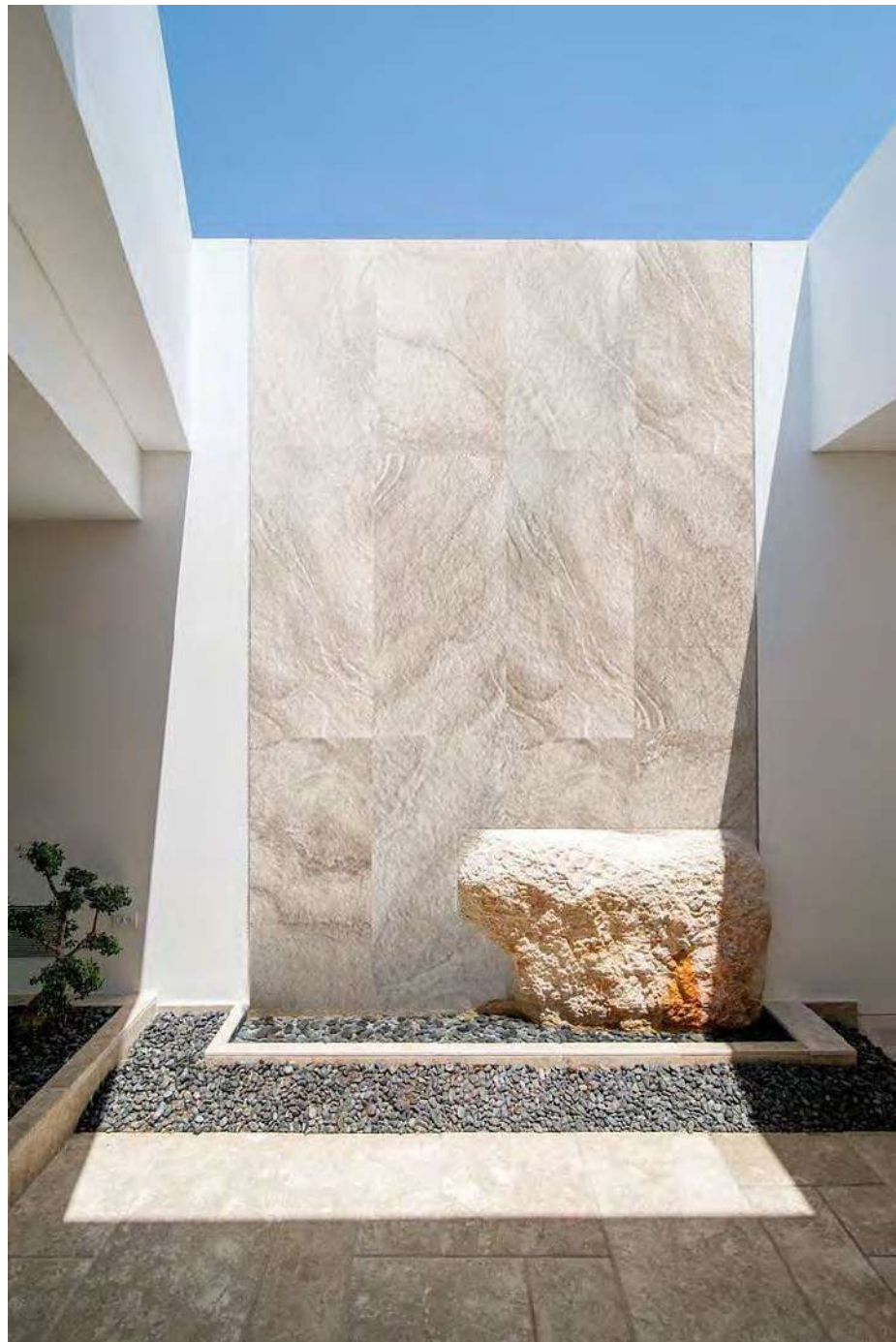
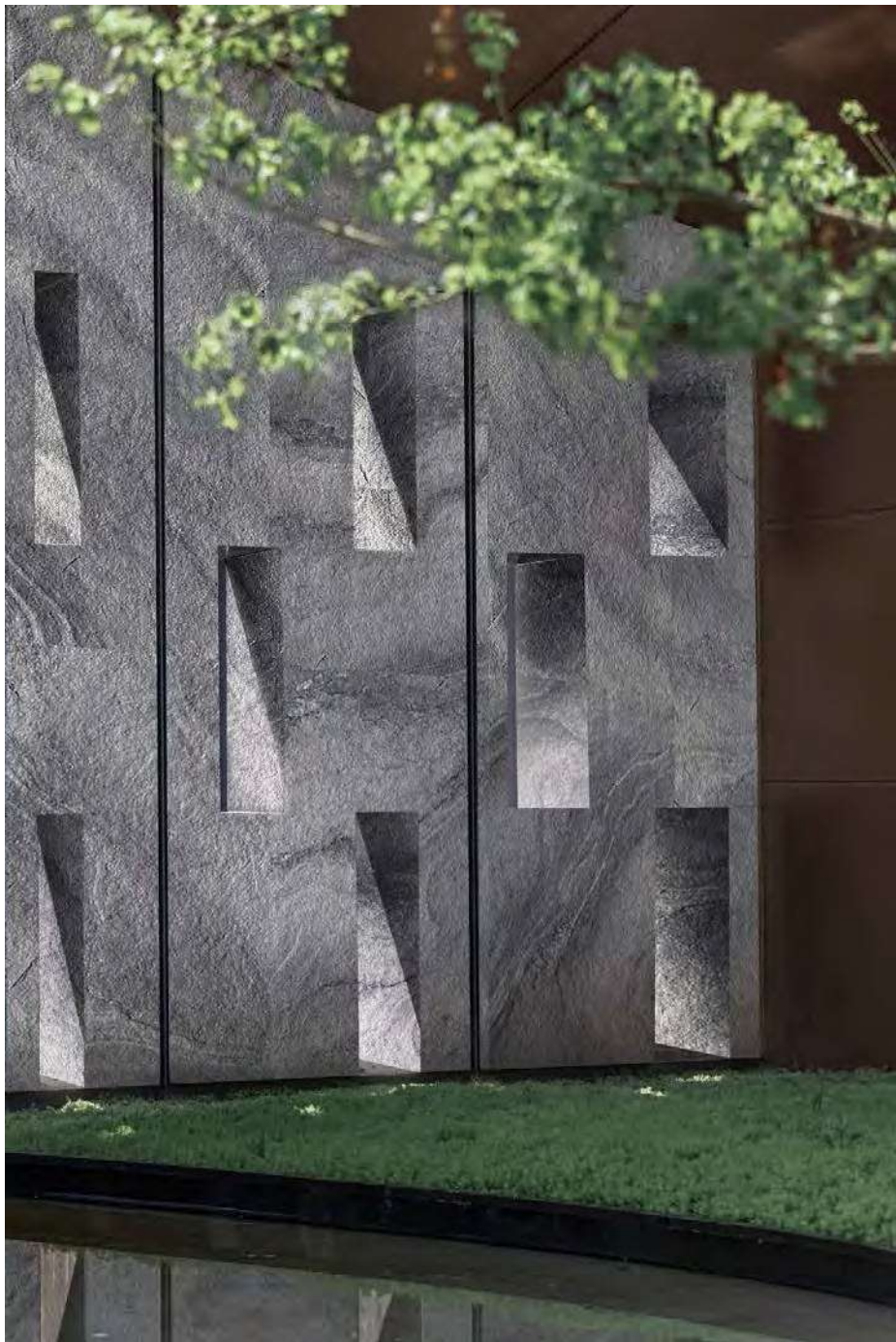
Stream limestone
Size: 600*1200mm
Thickness: 2.5-6mm



Claybank



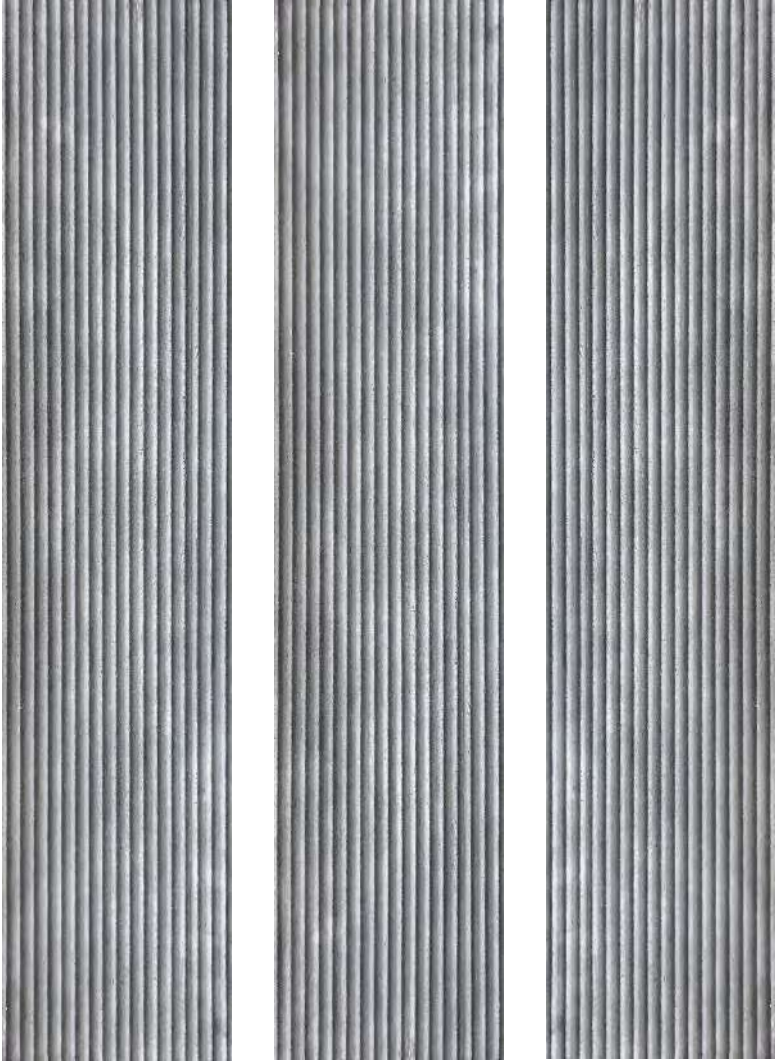
Dark Grey



Dolomitic Marble Pillar
Size: 600*2780mm
Thickness: 4-8mm

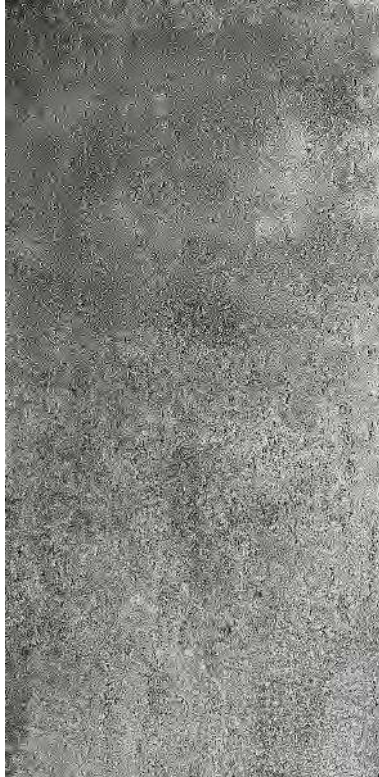


Ando Marble Pillar/Cement Grey
Size: 600*2780mm
Thickness: 4-8mm





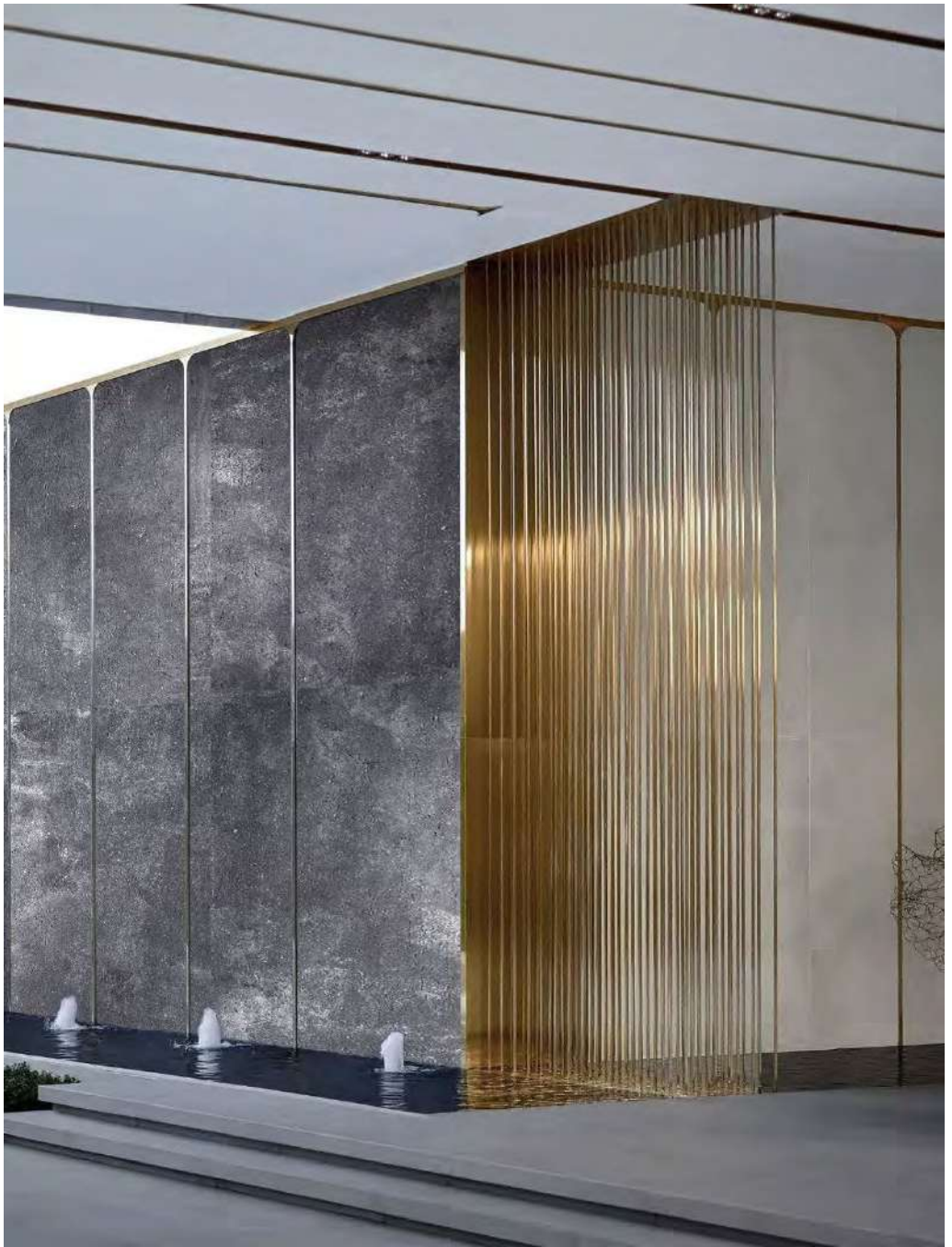
Ando Cement
Size: 600*1200mm
Thickness: 2.5-3.5mm



Light Grey



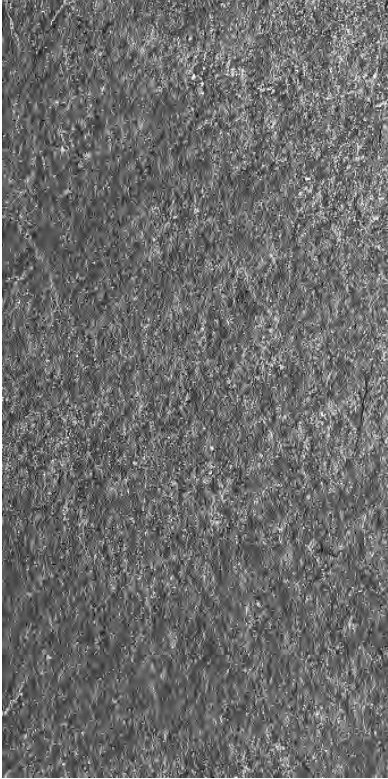
Dark Grey



Lime stone

Size: 600*1200mm

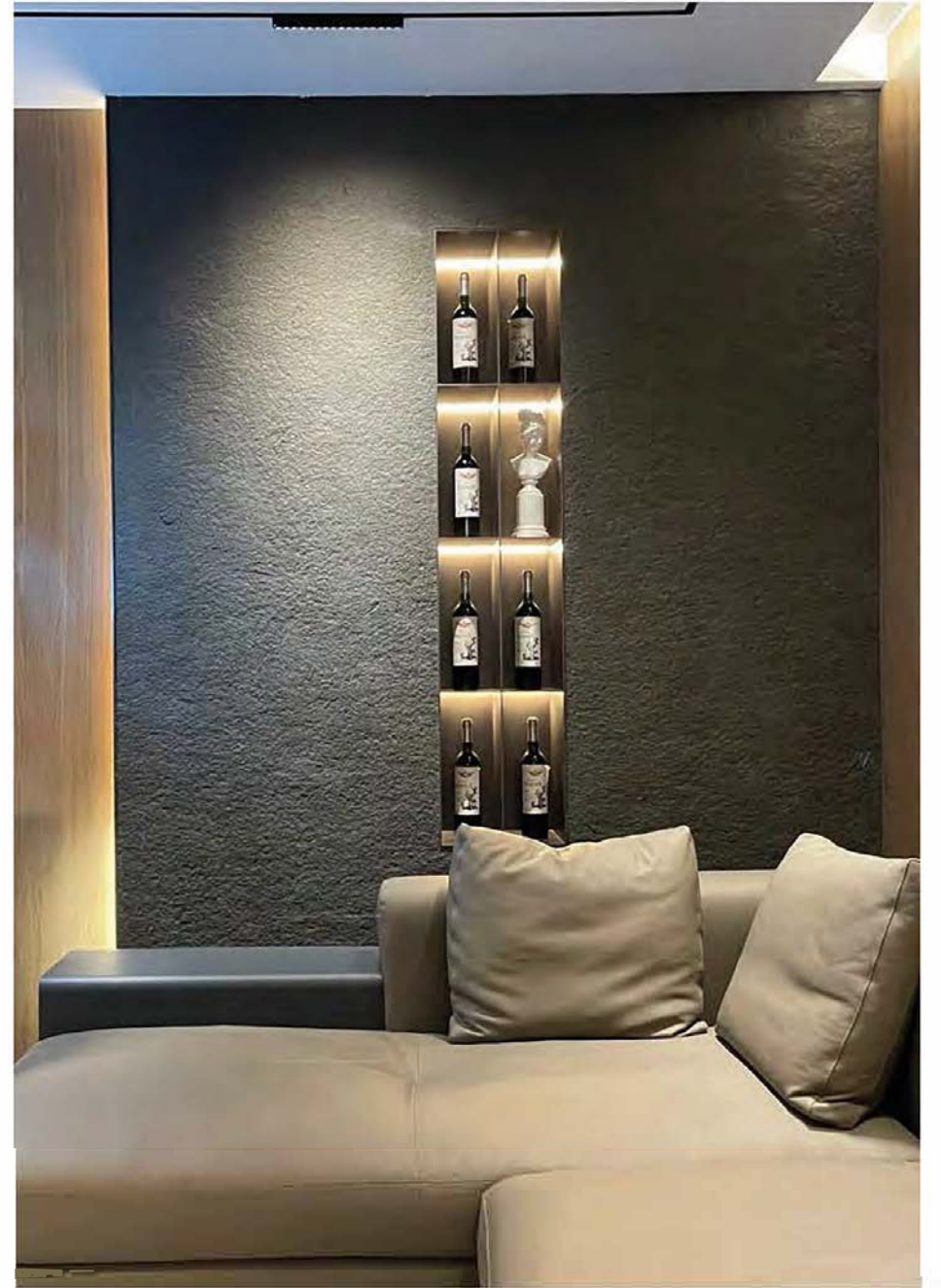
Thickness: 2.5-6mm



Dark Grey



Off-White



Skyline Stone
Size: 600*1200mm
Thickness: 2.5-3.5mm



Nile Grey



Nile Red



Nile Yellow





RON MUECK





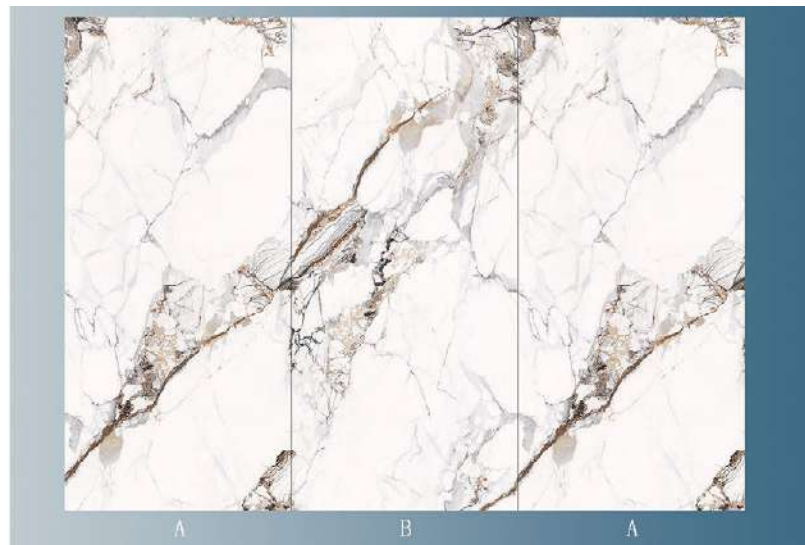




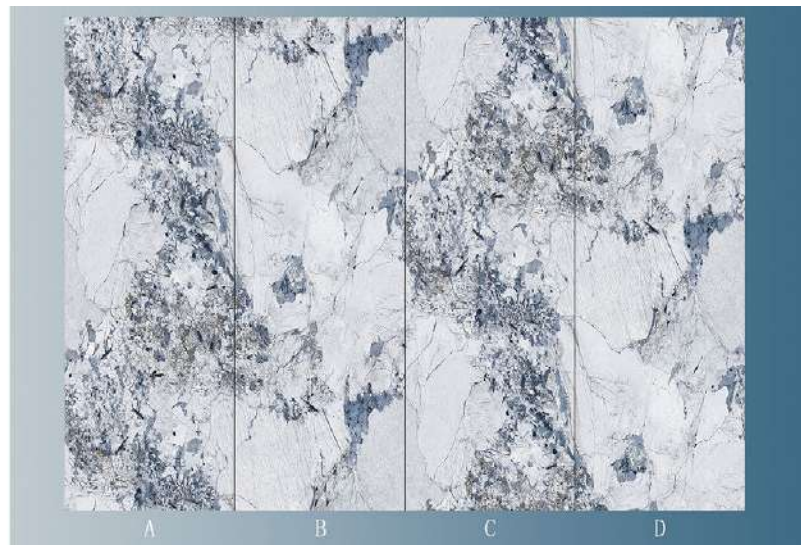




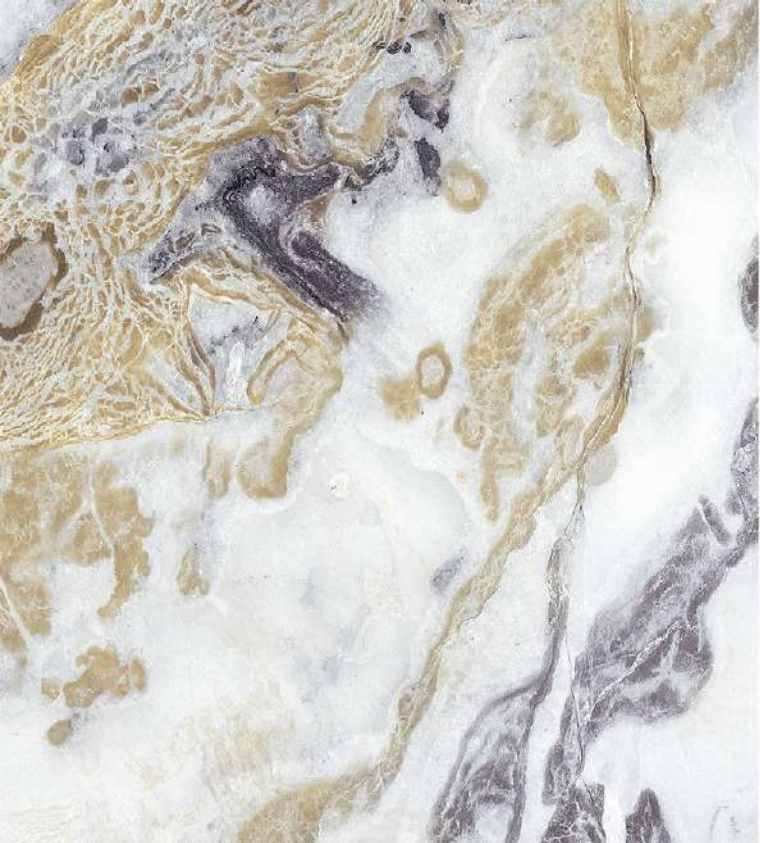






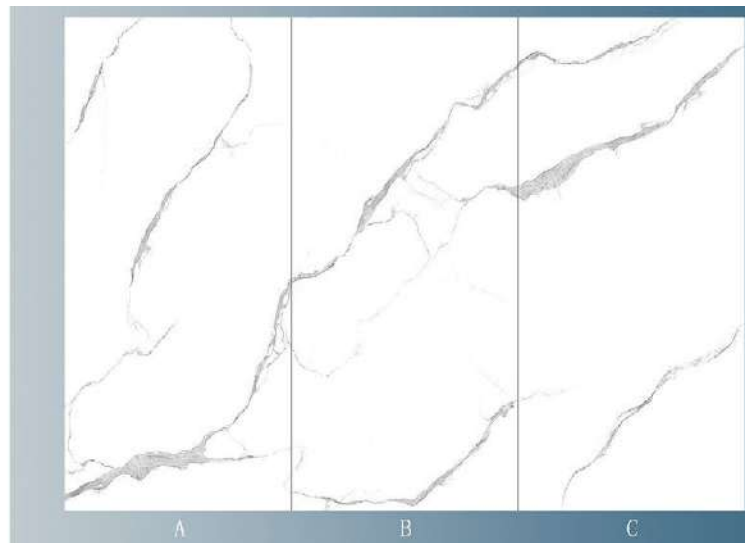
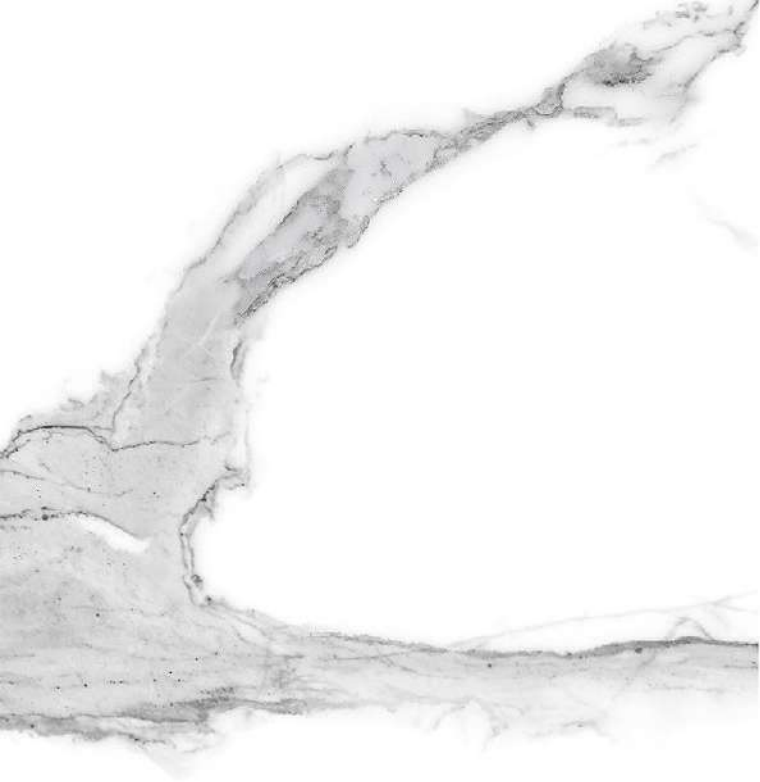




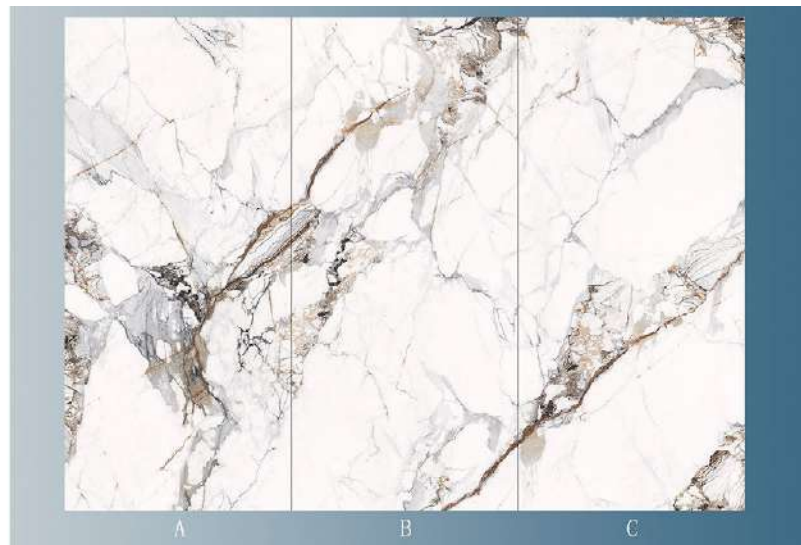
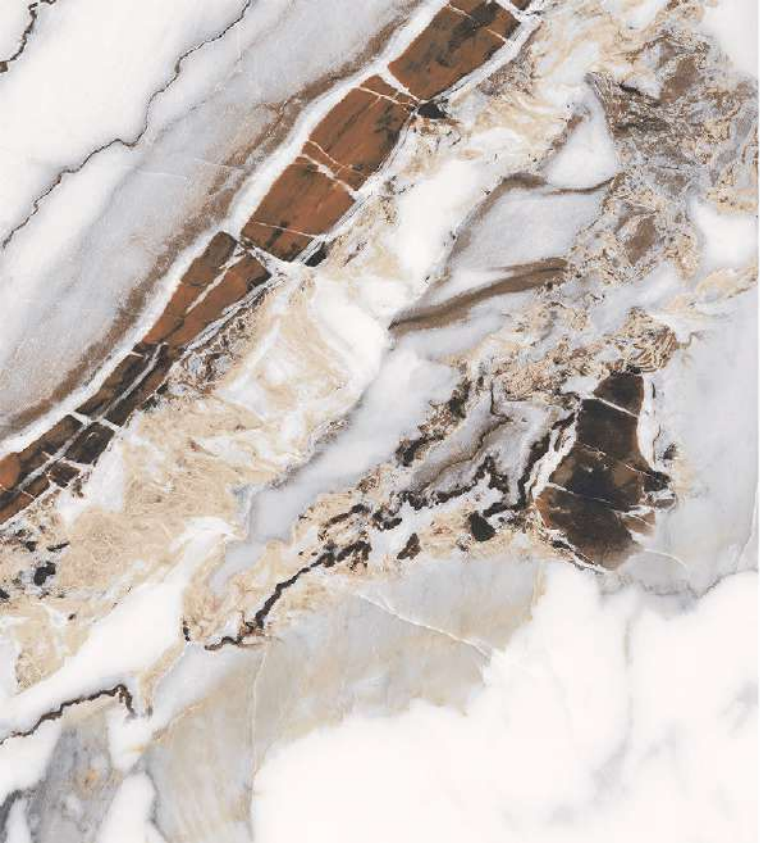














A

B

C



